



IT認證考試題庫 專業平臺

考證寶提供最新考古題與模擬試題
協助您高效通過認證考試

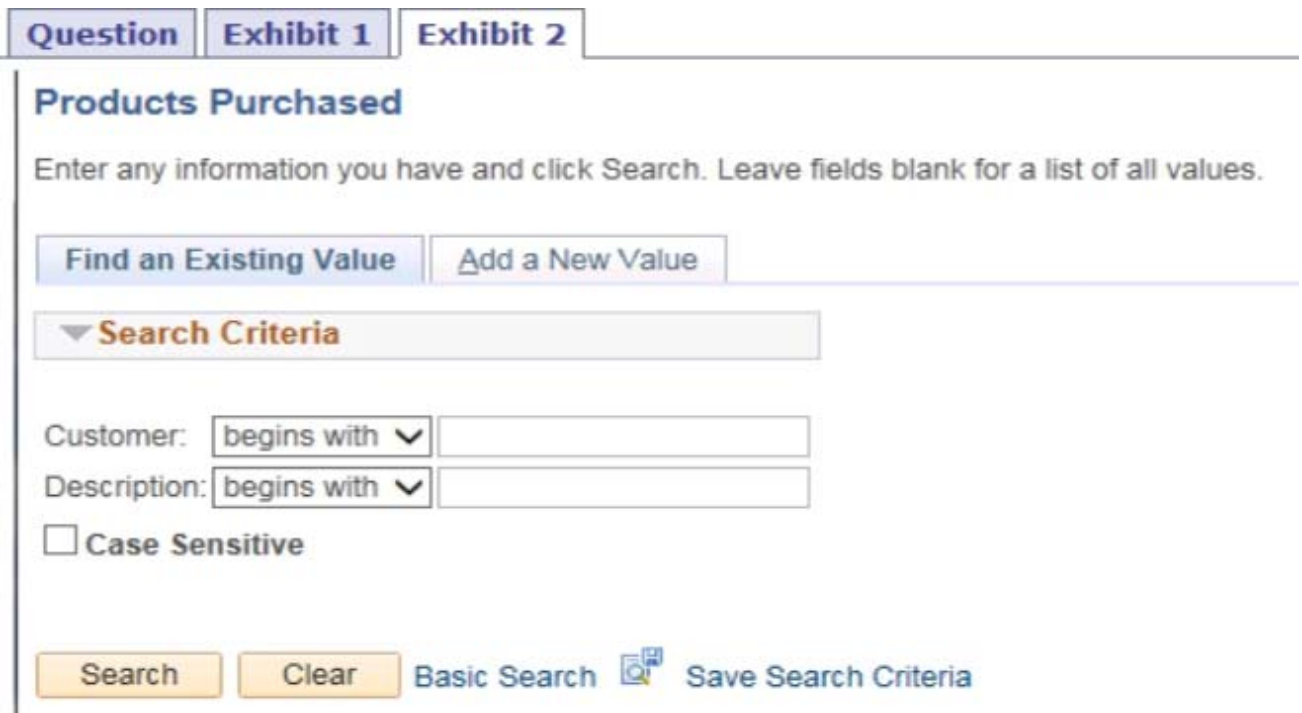
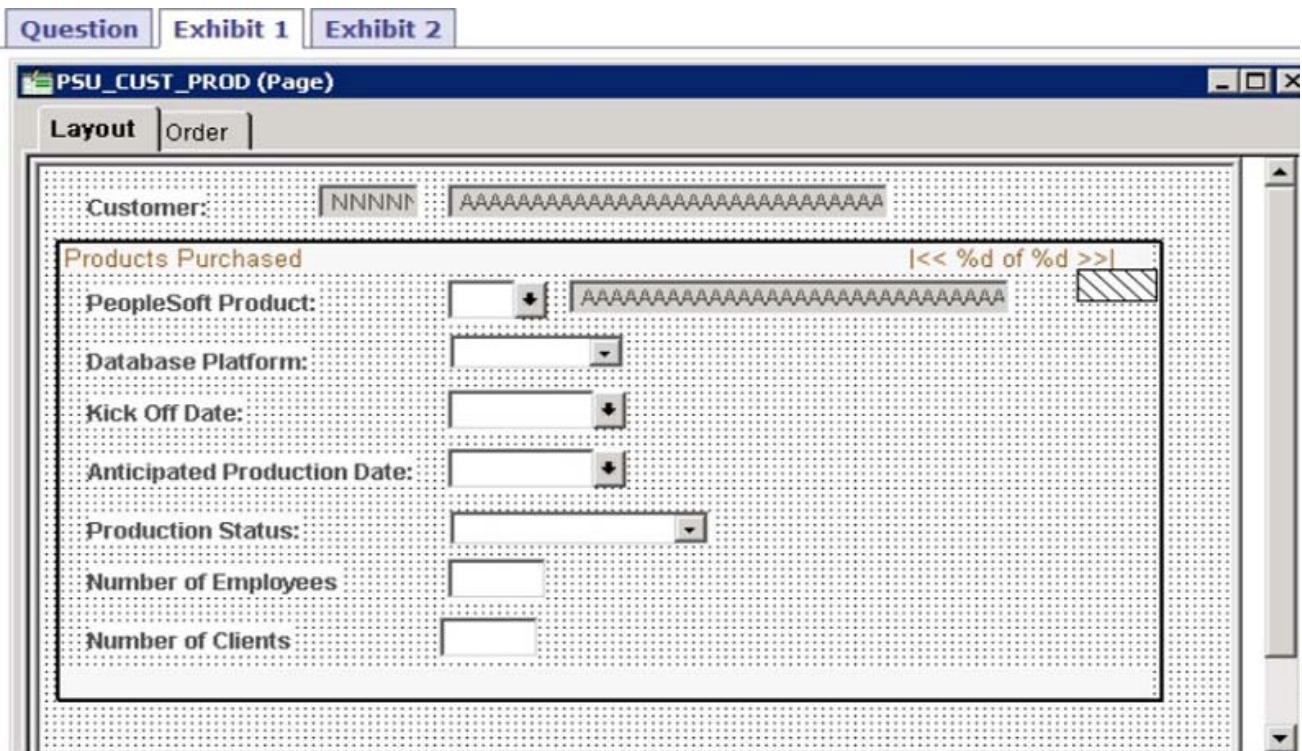
www.kaozhengpro.com

Exam : **1Z0-632**

Title : PeopleSoft PeopleTools
8.5x Implementation
Essentials

Version : DEMO

1.View the exhibits.



- Based on the page layout, what is wrong with the search page and how should you fix it?
- A. The Add actions should not be available; check the component definition for the Item Label
 - B. Include History and Correction should be displayed; check the Internet tab of the Component Properties dialog box
 - C. The Add action should not be available; check the Internet tab of the Component Properties dialog box
 - D. Include History and Correction should be displayed; check the Use tab of the Component Properties

dialog box

E. The Add action should not be available; check the Use tab of the Component Properties dialog box

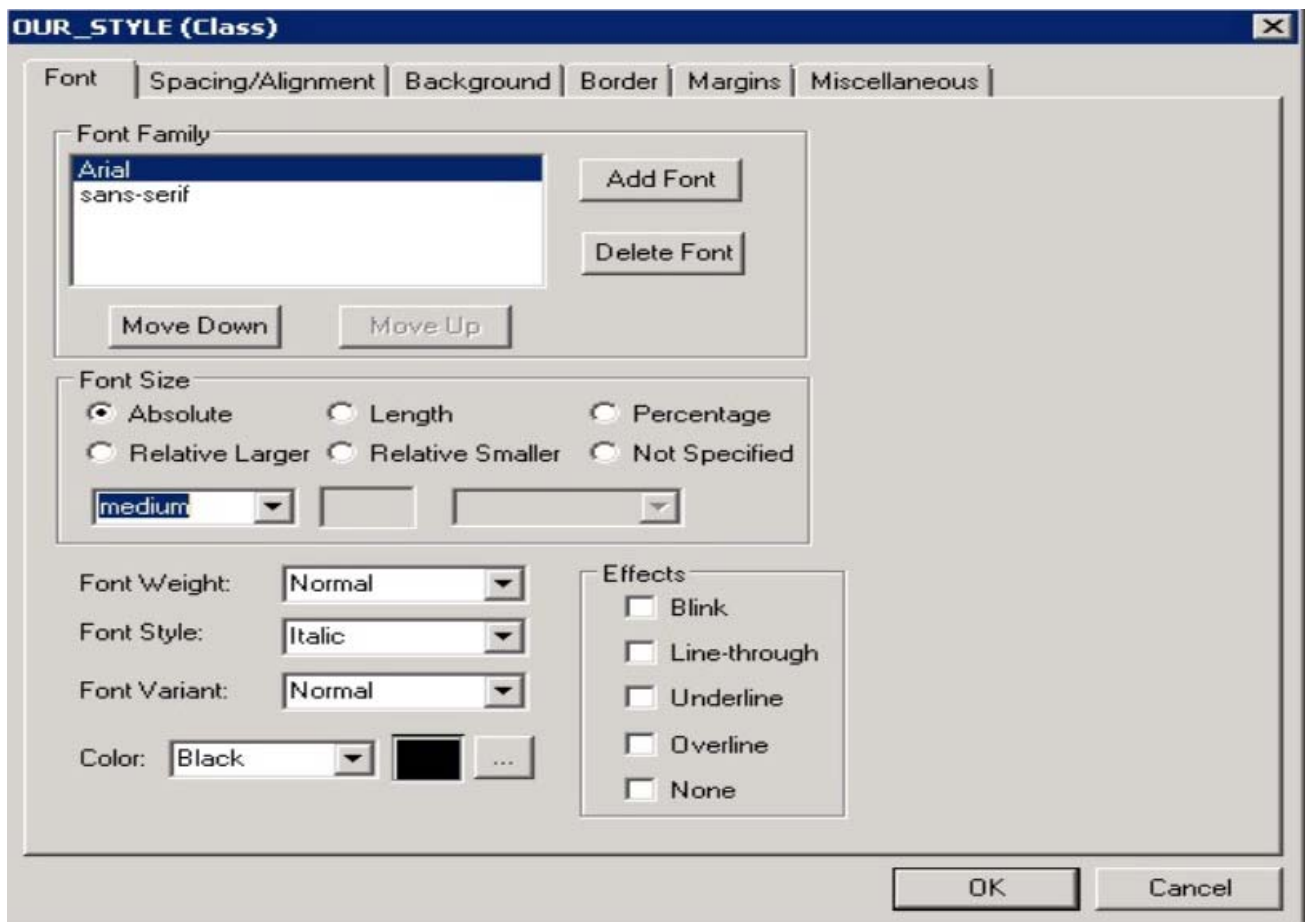
Answer: D

Explanation:

Reference:

https://docs.oracle.com/cd/E57990_01/pt853pbh2/eng/pt/tpst/task_WorkingwithSearchPages-027de6.html#topofpage

2.A colleague needs to update a custom cascading style sheet (CSS) style for your team’s fluid application. She has the style definition shown in this exhibit open in Application Designer, but isn’t sure if she has opened the correct style definition and asks for your advice.



How do you know she does not have a fluid CSS style open?

- A. The fluid user interface does not use the Arial or the sans-serif fonts. The fluid user interface uses only the Lucida Grande and Helvetica Neue fonts
- B. In the fluid user interface, font color is not set on the style definition. The current branding theme is what determines the font color for the fluid user interface display
- C. The fluid user interface does not use absolute font sizes. Only relative font sizes apply to the dynamic nature of the fluid user interface
- D. The fluid user interface uses only free form style sheets, and this style sheet is a fixed from style sheet
- E. Fluid style sheets all have _FL appended to the style name

Answer: D

Explanation:

Reference: <http://technoeureka.blogspot.com/2018/03/applying-css-styling-to-field-values-on.html>

3.Examine this PeopleCode program excerpt: Select the three correct statements. (Choose three.)

```
class OCP_ROWSET extends Rowset

    property integer FilledRowCount get;
    method OCP_ROWSET(&strRecName As string, &strDataFld As string,
&strGetOrCreate As string
    method InsertRow(&iRow As integer) Returns boolean;

end-class;
```

- A. The OCP_ROWSET method runs automatically whenever an object is instantiated from the OCP_ROWSET class
- B. OCP_ROWSET is the constrictor method for the OCP_ROWSET class
- C. Executing the RO_ROWSET method instantiates an object of the OCP_ROWSET class
- D. The OCP_ROWSET method must initialize an object of the Rowset class
- E. The OCP_ROWSET method is added to the Rowset class, and, by extension, to any instances of the Rowset class

Answer: ABD

4.Which three actions occur during the component build process? (Choose three.)

- A. Component record RowInit PeopleCode runs
- B. Record field FieldFormula PeopleCode runs
- C. Component record RowInsert PeopleCode runs
- D. All component-level PeopleCode runs
- E. Record field RowInsert PeopleCode runs
- F. Record field RowInit PeopleCode runs
- G. All rows in the record are loaded into the component buffer

Answer: BCD

5.You receive the following memo:

We need a new field to store skills. At the present time, we have identified five skills; however, this will likely increase in the future. Each skill will have a three-character code and a description. We want the skill to be searchable by the description.

How would you create this field?

- A. Create a three-character field for SKILL and add translate values for the initial five skills defined. When you add the field to the record, set it up as an alternate search key and translate table edit
- B. Create a three-character field for SKILL and then create a Skills table with two fields: SKILL and DESCR. When you add the field to the record, set it up as a prompt table edit referencing the Skills table
- C. Create a three-character field for SKILL and then create a Skills table with two fields: SKILL and DESCR. When you add the field to the record, set it up as an alternate search key and prompt table edit referencing the Skills table
- D. Create a three-character field for SKILL and add translate values for the initial five skills defined. When you add the field to the record, set it up as a translate table edit

Answer: D