



KaozhengPro

# IT認證考試題庫 專業平臺

考證寶提供最新考古題與模擬試題  
協助您高效通過認證考試

[www.kaozhengpro.com](http://www.kaozhengpro.com)

**Exam** : **310-090**

**Title** : Sun Certified Business  
Component Developer for  
J2EE 1.3

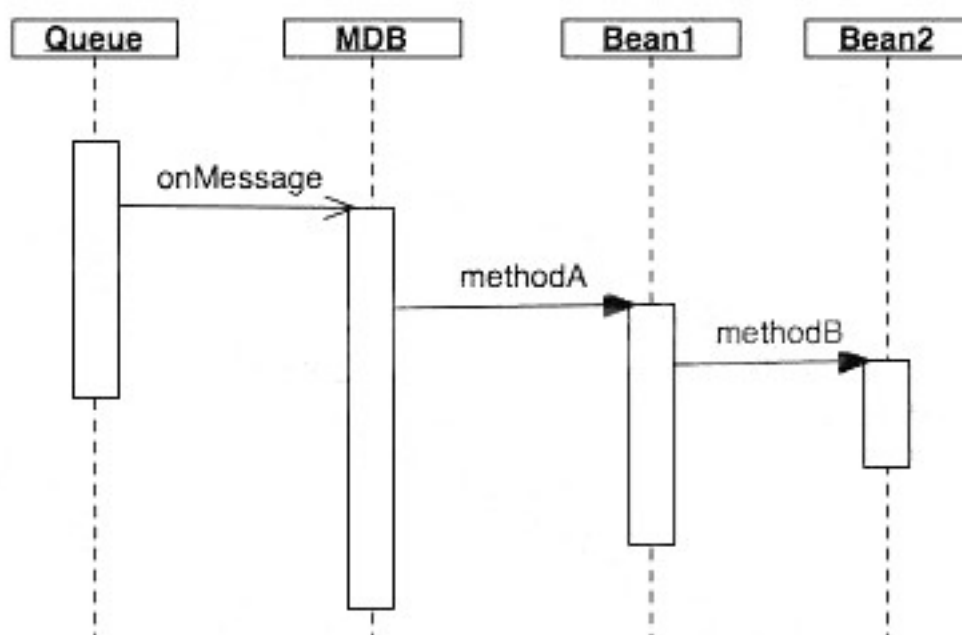
**Version** : Demo

1. Which two must be in an ejb-jar file, either by inclusion or reference? (Choose two.)

- A. an enterprise archive (.ear) file
- B. a deployment descriptor in the format defined by the EJB 2.0 specification
- C. the class files for the classes that implement the home and remote interfaces
- D. the class files for the interfaces and superinterfaces used by the bean, except J2SE or J2EE interfaces
- E. the class files for the stub classes of the EJBHome andEJBObject interfaces, if remote interfaces are deployed for the bean

**Answer:** B D

2. Click the Exhibit button.



All beans involved use container-managed transactions and all methods are marked as Required. At runtime, methodB is unable to communicate with its resource and calls the setRollbackOnly method. What is the result?

- A. JMS message redelivery semantics will apply.
- B. The rollback will propagate to the sender of the message.
- C. The bean's onMessage method will reattempt the sequence.
- D. Transactions started by the onMessage method will always commit.

**Answer:** A

3. Which transaction attribute may cause a javax.transaction.TransactionRequiredException to be thrown?

- A. Required
- B. Supports

- C. Mandatory
- D. RequiresNew

**Answer: C**

4. Which exception can be thrown by the findByPrimaryKey method of a remotely called entity bean using container-managed persistence?

- A. javax.ejb.EJBException
- B. javax.ejb.DuplicateKeyException
- C. javax.ejb.NoSuchEntityException
- D. javax.ejb.ObjectNotFoundException

**Answer: D**

5. Given:

8. `<session>`

9. `<resource-ref>`

10.

11. `</resource-ref>`

12. `</session>`

Which two elements must be included in the `<resource-ref>` tag? (Choose two.)

- A. `<res-type>`
- B. `<res-ref-name>`
- C. `<resource-env-ref>`
- D. `<environment-resource>`

**Answer: A B**

6. Which is a Bean Provider's security-related responsibility?

- A. assigns principals to roles in the application server
- B. declares the role-link element in the deployment descriptor
- C. declares the security-role element in the deployment descriptor
- D. declares the security-role-ref element in the deployment descriptor

**Answer: D**

7. Which two statements about a client's reference to a session bean's remote home interface are true? (Choose two.)

- A. The reference can be passed as a method argument.
- B. The reference provides the client with the IP address of the bean instance.

- C. The reference provides the client with access to at least one create method.
- D. A new home reference must be obtained for each new reference to a remote component interface.

**Answer:** A C

8. Which method from `javax.ejb.EJBContext` returns an object that allows a Bean Provider to demarcate transactions?

- A. `begin()`
- B. `getAutoCommit()`
- C. `getTransaction()`
- D. `beginTransaction()`
- E. `getUserTransaction()`

**Answer:** E

9. Which statement is true about a session bean's lifecycle?

- A. Session beans cannot receive re-entrant loopback calls.
- B. A stateless session bean's home interface can have overloaded create methods.
- C. Stateless session beans can implement `javax.ejb.SessionSynchronization`.
- D. The EJB 2.0 container can make concurrent calls to any stateful session bean instance.

**Answer:** A

10. Which method can be found in BOTH the `EJBHome` and `EJBLocalHome` interface?

- A. `getHomeHandle()`
- B. `getEJBMetaData()`
- C. `remove(Handle handle)`
- D. `remove(Object primaryKey)`

**Answer:** D

11. Which two are valid types for persistent fields in a CMP 2.0 entity bean? (Choose two.)

- A. Java primitives
- B. entity bean local interfaces
- C. classes implementing `java.io.Serializable`
- D. either `java.util.Collection` or `java.util.Set`

**Answer:** A C

12. Label the methods according to whether the container ensures that the identity of the associated entity object is available or unavailable to the instance during the method.

Identity Availability	Methods	
place label here	ejbCreate<METHOD>	
place label here	unsetEntityContext	
place label here	ejbPassivate	Identity available
place label here	ejbPostCreate	Identity unavailable
place label here	setEntityContext	
place label here	ejbRemove	

Answer:

Identity Availability	Methods
Identity unavailable	ejbCreate<METHOD>
Identity unavailable	unsetEntityContext
Identity available	ejbPassivate
Identity available	ejbPostCreate
Identity unavailable	setEntityContext
Identity available	ejbRemove

13. Which two are required to properly implement a CMP entity bean class? (Choose two.)

- A. Declare variables for all persistent fields.
- B. Provide constructors to initialize the CMP fields.
- C. Do not implement the ejbFind<METHOD> methods.
- D. Provide implementation code for get and set methods to store and retrieve the persistent fields.
- E. Implement ejbCreate<METHOD> methods for all home interface create<METHOD> methods.

Answer: C E

14. Which statement about EJB QL is true?

- A. An EJB QL query must contain the ORDER BY clause.
- B. An EJB QL query is statically defined in the ejb-jar.xml deployment descriptor.
- C. Duplicate values are always removed from EJB QL query results by the container.
- D. It is legal to use an input parameter in the FROM clause or the SELECT clause of an EJB QL query.

**Answer: B**

15. What two statements are true about EJB 2.0 container crashes? (Choose two.)

- A. Entities will survive.
- B. An entity bean's primary key will survive.
- C. Message-driven bean instances will survive.
- D. Stateful session bean instances will survive.
- E. Crashes are guaranteed to be transparent to clients using entity beans.

**Answer: A B**

16. Which is a feature of EJB 2.0?

- A. It provides synchronous message handling through message driven beans.
- B. It provides support for both local and remote client views for session beans.
- C. It provides support for both local and remote client views for message driven beans.
- D. It guarantees that all services represented by an object will have conversational state.

**Answer: B**

17. Which is a capability guaranteed by all EJB 2.0 containers?

- A. JTA support
- B. server failover
- C. load balancing
- D. servlet support
- E. server clustering

**Answer: A**

18. Which accurately describes a characteristic of EJB 2.0?

- A. EJB 2.0 is an example of a web-based component model.
- B. EJB 2.0 components must be directly accessible via HTTP.
- C. EJB 2.0 is an example of a component model for GUI applications.
- D. EJB 2.0 applications can link to legacy systems using a J2EE connector.

**Answer: D**

19. Which two APIs are provided to the Bean Provider by an EJB 2.0 container? (Choose two.)

- A. JTA
- B. JMX

- C. JSP
- D. JDO
- E. JAXP

**Answer:** A E

20. Which two are guaranteed to a Bean Provider using an EJB 2.0 container? (Choose two.)

- A. access to the JCE API
- B. access to JavaMail API
- C. access to the JXTA API
- D. access to the JAXP API

**Answer:** B D

21. Which two statements are true? (Choose two.)

- A. The EJB container must not allow the same enterprise bean to be deployed multiple times.
- B. The EJB container must allow IIOP invocations on remote component and home interfaces.
- C. The EJB container is not required to support publishing home references in a CORBA CosNaming service.
- D. The EJB container must implement the resource manager connection factory classes for resource managers configured with the container.
- E. The EJB container must allow enterprise beans deployed in the same enterprise archive to access one another directly without having to go through home or remote interfaces.

**Answer:** B D

22. Which feature is mandatory for an EJB 2.0 compliant container?

- A. JMX support
- B. JVM co-resident JSPs
- C. deferred database writes
- D. lazy loading of entity bean data
- E. client principal caller propagation

**Answer:** E

23. Which two must a Bean Provider avoid in an enterprise bean to ensure that the bean is portable to any compliant EJB 2.0 container? (Choose two.)

(Assume that all reference variables have been correctly and legally initialized.)

- A. `java.sql.Connection c = aDataSource.getConnection();`
- B. `java.security.Principal p = context.getCallerPrincipal();`
- C. `QueueSession q = aQueueConnection.createQueueSession(true, 0);`
- D. `Object o = new Object();`

```
Object o2 = o.getClass().getClassLoader();
```

```
E. java.io.FileInputStream fs = new java.io.FileInputStream("MyFile");
```

**Answer:** D E

24. What are two programming restrictions in the EJB 2.0 specification? (Choose two.)

- A. An enterprise bean must not declare static fields as final .
- B. An enterprise bean must not attempt to load a native library.
- C. An enterprise bean must not attempt to create a new security manager.
- D. An enterprise bean must not propagate a RuntimeException to the container.
- E. An enterprise bean must not attempt to obtain a javax.naming.InitialContext .

**Answer:** B C

25. Which two actions could adversely affect the portability of an EJB 2.0 bean? (Choose two.)

- A. changing a thread's priority
- B. directly reading or writing a file descriptor
- C. using java.net.Socket to be a network client
- D. demarcating a transaction in a stateless session bean
- E. using bean-managed transactions in a message-driven bean

**Answer:** A B

26. What is true about using java.net.Socket and java.net.ServerSocket within session bean business methods?

- A. Both classes can be used.
- B. Neither class can be used.
- C. Of the two classes, only java.net.Socket can be used.
- D. Of the two classes, only java.net.ServerSocket can be used.

**Answer:** C

27. Given:

```
4. <method-permission>
```

```
5. <role-name>employee</role-name>
```

```
6. <method>
```

```
7. <ejb-name>EmployeeService</ejb-name>
```

```
8. </method>
```

```
9. </method-permission>
```

Which EJB role is responsible for supplying this information?

- A. Deployer
- B. Bean Provider
- C. Container Provider
- D. System Administrator
- E. Application Assembler

**Answer: E**

28. Place the expertise on its associated EJB role.

Expertise	Role
Place expertise label here	Bean provider
Place expertise label here	Application assembler
Place expertise label here	Deployer
Place expertise label here	EJB container provider
Place expertise label here	System administrator

system level service developer	component programming	operational environment
domain knowledge	run-time management	

**Answer:**

Expertise	Role
component programming	Bean provider
domain knowledge	Application assembler
operational environment	Deployer
system level service developer	EJB container provider
run-time management	System administrator

29. Which two must a Bean Provider supply for each enterprise bean in the deployment descriptor?

(Choose two.)

- A. security roles
- B. the JNDI name of the enterprise bean
- C. the enterprise bean type: session, entity, or message-driven
- D. the value of the transaction attributes for the home and component interface methods
- E. the fully-qualified name of the class that implements the enterprise bean's business methods

**Answer: C E**

30. Who must ensure that a bean's environment entries are set to meaningful values?

- A. Deployer
- B. Bean Provider
- C. EJB Server Provider
- D. System Administrator
- E. Application Assembler
- F. EJB Container Provider

**Answer: A**