



KaozhengPro

IT認證考試題庫 專業平臺

考證寶提供最新考古題與模擬試題
協助您高效通過認證考試

www.kaozhengpro.com

Exam : **642-964**

Title : Cisco Data Center
Networking Infrastructure
Solutions Support

Version : DEMO

1.What will be upgraded as a result of this command? upgrade ftp://ftuser@10.1.2.3//upgrade/IPS-K9-r-1.1-a-5.1-1.pkg

- A.recovery partition
- B.application partition
- C.both application and recovery partitions immediately
- D.both application and recovery partitions at the next scheduled automatic IDSM update

Correct:A

2.On a Cisco Catalyst 6500 Series Switch, how many physical links can be aggregated into an EtherChannel group?

- A.4
- B.8
- C.16
- D.32

Correct:B

3.How would you configure a NAM to monitor and report the most heavily viewed sections of a website?

- A.Create a separate domain name or virtual server IP address for each section of the site. Add each domain name or IP address to the NAM application protocol directory.
- B.Enable regular-expression pattern matching. Define application protocol filters based on regular expressions that match the desired URLs.
- C.Enable URL monitoring. Define each desired URL as an application in the protocol directory.
- D.Use SPAN or VACLs to capture upper-layer protocol data from the web servers. Use a third-party application to parse the stored capture files.

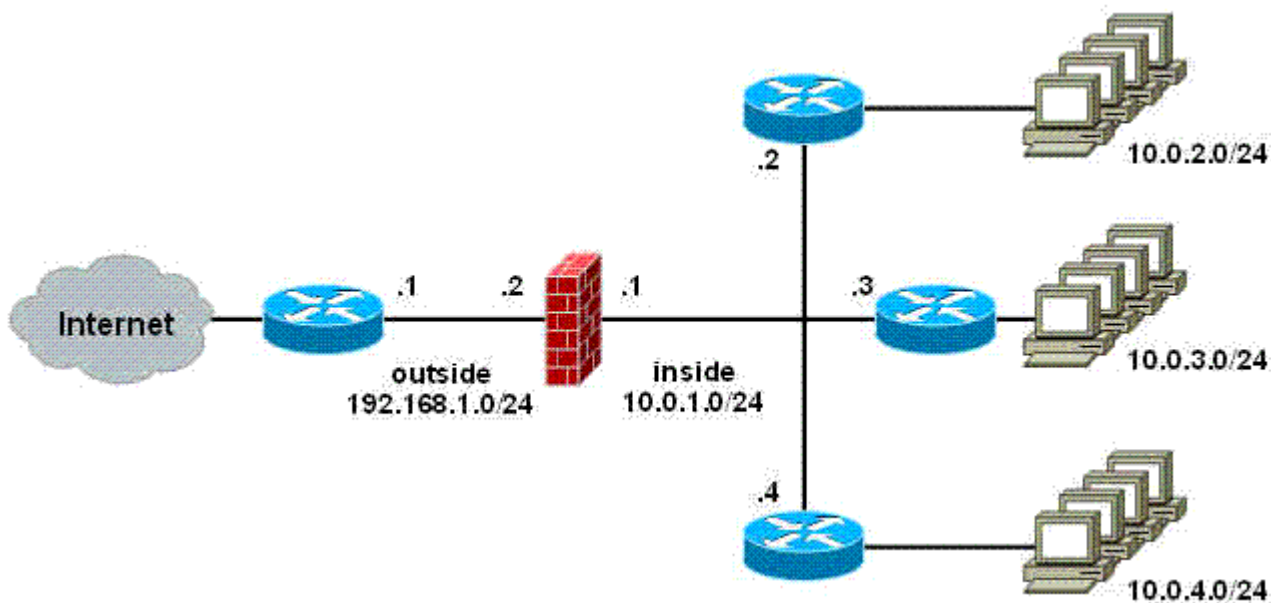
Correct:C

4.How can you configure the NAM to view a list of all switches that are sending NDE packets?

- A.Enter the command sh data-source nde.
- B.Configure Cisco Discovery Protocol to detect all switches on the network.
- C.Launch NetFlow Listening Mode from the Cisco Traffic Analyzer application.
- D.The NAM will automatically detect NDE broadcasts and add each switch to the NetFlow device table.

Correct:C

5.Refer to the exhibit. Which FWSM command allows routing of TCP traffic from the Internet to network 10.0.3.0/24?



- A.access-list inside permit tcp 192.168.1.0 255.255.255.0 10.0.3.0 255.255.255.0
- B.route inside 10.0.3.0 255.255.255.0 10.0.1.3
- C.route outside 10.0.3.0 255.255.255.0 10.0.1.3
- D.route inside 0 0 10.0.1.3

Correct:B

6.Which command must be issued to activate the FWSM firewall context?

- A.allocate-vlan
- B.config-url
- C.limit-resource
- D.map-interface

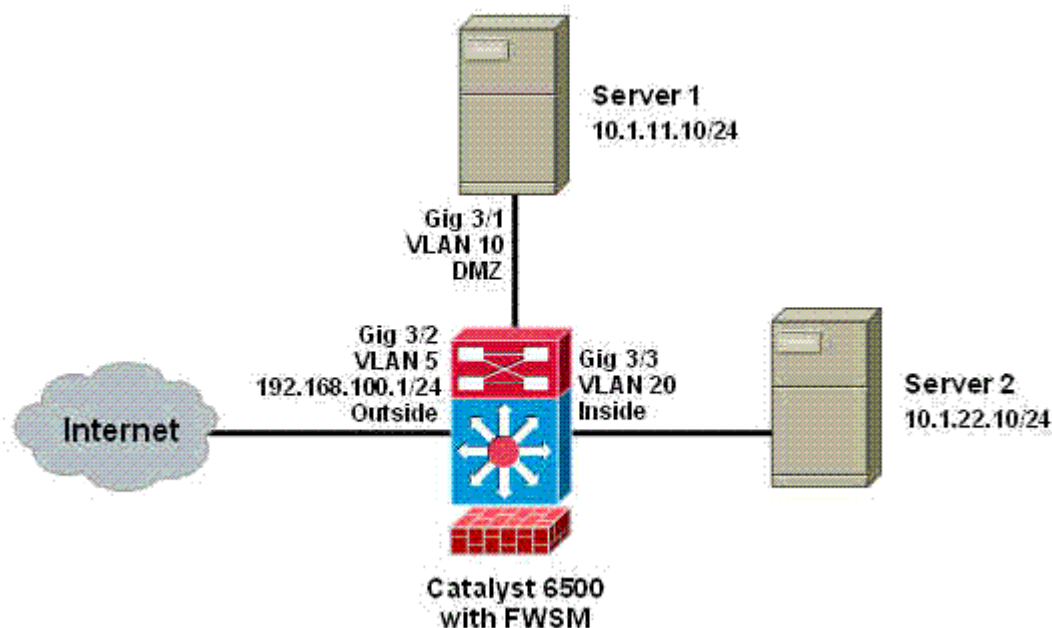
Correct:B

7.The IDSM management-interface IP address can be configured from which prompt?

- A.IDSM(config)#
- B.IDSM(config-hos-net)#
- C.IDSM(config-mgmt)#
- D.IDSM(config-if)#

Correct:B

8.Refer to the exhibit. Which command would you use on the FWSM to provide a default route from Servers 1 and 2 to the Internet?



- A.route inside 0 0 192.168.100.1
- B.route inside 10.1.0.0 255.255.0.0 192.168.1.1
- C.route outside 0 0 192.168.100.1
- D.route outside 10.1.0.0 255.255.0.0 192.168.1.1

Correct:C

9.Which statement is correct regarding Layer 3 EtherChannels?

- A.They are STP-aware.
- B.They cannot be automatically negotiated.
- C.Multiple EtherChannels are used between a pair of switches.
- D.Multiple EtherChannels between two switches create an STP loop.

Correct:C

10.What is the effect of executing the command intrusion-detection module 5 management-port access-vlan 10 on an IDSM?

- A.allows the IDSM to be managed by devices in VLAN 10
- B.configures the IDSM to monitor traffic from VLAN 10 in in-line mode
- C.allows the IDSM to perform blocking actions on devices in VLAN 10
- D.configures the IDSM to monitor traffic from VLAN 10 in promiscuous mode

Correct:A