



KaozhengPro

IT認證考試題庫 專業平臺

考證寶提供最新考古題與模擬試題
協助您高效通過認證考試

www.kaozhengpro.com

Exam : **920-226**

Title : Nortel Converged Campus
ERS Installation &
Configuration

Version : DEMO

1.What is the front panel port configuration for the Ethernet Routing Switch 2550T-PWR?

- A. 48 10/100BaseT ports (PoE on 24 ports) two combo 10/100/1000BaseT or SFP ports
- B. 48 10/100BaseT ports (PoE on 48 ports) two combo 10/100/1000BaseT or SFP ports
- C. 50 10/100BaseT ports (PoE on 25 ports) two combo 10/100/1000BaseT or SFP ports
- D. 50 10/100BaseT ports (PoE on 50 ports) two combo 10/100/1000BaseT or SFP ports

Answer:A

2.How many Ethernet Routing Switch 4500s can be connected in a single stack ?

- A. 4
- B. 8
- C. 10
- D. 12

Answer: B

3.The Ethernet Routing Switch (ERS) 5500 portfolio share a number of common hardware features. Which feature is unique to the ERS 5530 and is not available on the other ERS 5500 switches ?

- A. Universal Serial Bus (USB) port
- B. Network management Ethernet port
- C. User Interface push button
- D. Console serial port

Answer:A

4.What is the maximum number of Gigabit Ethernet ports on a single Ethernet Routing Switch 8300 Input/Output module ?

- A. 16
- B. 24
- C. 48
- D. 50

Answer: C

5.Click the Exhibit button.

```

Exhibit
IRS 8610co
ECT86101:5#
ECT86101:5#
ECT86101:5#
ECT86101:5#
ECT86101:5#
ECT86101:5#
ECT86101:5# show
ECT86101:5/show# sys
ECT86101:5/show/sys# infoasic
#
# Asic Info :
# SlotNum|Name |CardType |MdaType |Parts Description
#
# Slot 1 8648TXE 0x20210120 0x00000000 IOR: GMAC=5 BFN: OP=3 TRUX=2 RARU=4 CPLD=5
# Slot 2 8608GSE 0x20325108 0x00000000 IOR: GMAC=5 BFN: OP=3 TRUX=2 RARU=4 CPLD=9
# Slot 3 8632TXE 0x20210120 0x00000000 IOR: FLPO=3 GMAC=5 BFN: OP=3 TRUX=2 RARU=4 CPLD=9
# Slot 4 8632TXE 0x20210120 0x00000000 IOR: FLPO=3 GMAC=5 BFN: OP=3 TRUX=2 RARU=4 CPLD=9
# Slot 5 8691SF 0x20000100 0x00000000 CPU: CPLD=19 HEZI=2 SFB: OP=3 TRUX=2 SWIP=3 FAD=1 CF=16
# Slot 6 -- 0x00000001 0x00000000
# Slot 7 8632TXE 0x20210120 0x00000000 IOR: FLPO=3 GMAC=5 BFN: OP=3 TRUX=2 RARU=4 CPLD=9
# Slot 8 8632TXE 0x20210120 0x00000000 IOR: FLPO=3 GMAC=5 BFN: OP=3 TRUX=2 RARU=4 CPLD=9
# Slot 9 8608GSE 0x20325108 0x00000000 IOR: GMAC=5 BFN: OP=3 TRUX=2 RARU=4 CPLD=9
# Slot 10 8632TXE 0x20210120 0x00000000 IOR: FLPO=3 GMAC=5 BFN: OP=3 TRUX=2 RARU=4 CPLD=9
ECT86101:5/show/sys#

```

Based on the command line output shown in the exhibit, how many Gigabit Ethernet ports are available on this Ethernet Routing Switch 8600 ?

- A. 16
- B. 24
- C. 26
- D. 28

Answer: C

6. Consider the following deployment requirements, Support 40 100 Mb/s VoIP telephones, each with a power requirement of 6 Watts. Support 40 directly connected 1000 Mb/s Ethernet workstations with UTP cable. Support four 1 Gb/s Ethernet uplinks to the core switch using multimode fiber. Which configuration is the minimum hardware required for an Ethernet Routing Switch 8306 chassis that will support the above requirements ?

- A. Two 8348TX-PWR one 8393SF
- B. One 8348GTX one 8348TX-PWR one 8393SF
- C. One 8348GTX one 8348TX-PWR one 8308XL one 83938393SF
- D. Two 8348GTX-PWR one 8308XX one 8393SF

Answer: B

7. You are connecting a stack of two edge Ethernet Routing Switch (ERS) 552024T switches with an SMLT connection to the core switches using four uplink ports. Which command will correctly configure the SMLT connection on the ERS 5520 stack ?

- A. 5520-24T (config)# smlt 1 name SNLT-1 members 1/25-26, 2/25-26 learning fast
- B. 5520-24T (config)# smlt 1 name SNLT-1 members 1/25-26, 2/25-26 learning disable
- C. 5520-24T (config)# mlt 1 name SNLT-1 members 1/25-26, 2/25-26 learning fast
- D. 5520-24T (config)# mlt 1 name SNLT-1 members 1/25-26, 2/25-26 learning disable

Answer: D

8.You are configuring an uplink connection from a stack of Ethernet Routing Switch (ERS) 5500 to a core pair of ERS 8600 switches. Which statement about the correct uplink configuration is true ?

- A. Distribute uplinks across different ERS 5500 switches in the stack.
- B. Disable autoegotiation and replacelit with VLACP to identifysingle fiber fault failure.
- C. Use unique MLT IDs for each stack of edge ERS 550 switches.
- D. Enable SpanningTree Protocolfor the MLT when using it with SMLT in thecore of the network.

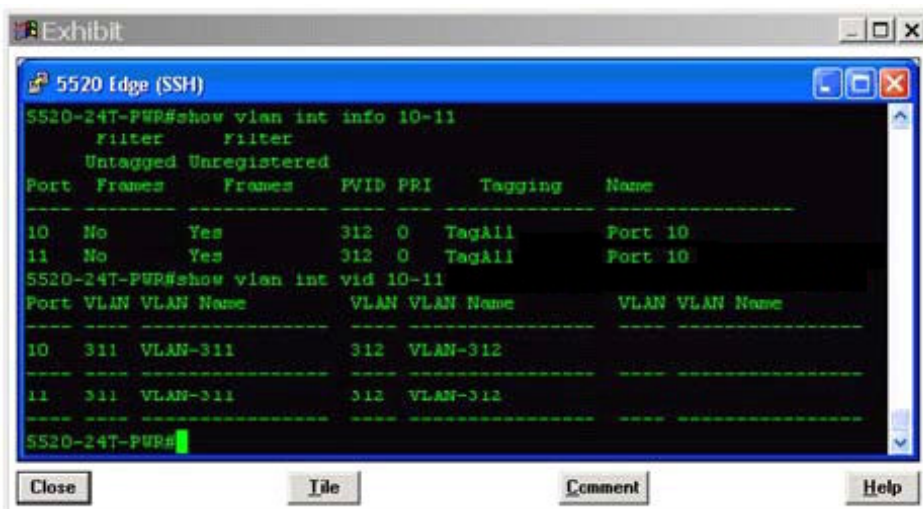
Answer:A

9.Where do you implement the rate-limit feature of the Converged Campus architecture?

- A. Uplink ports on the core switches
- B.Accessportson the edge switches
- C. Inter SwitchTrunk portson the core switches
- D. Uplink portson theedge switches

Answer: B

10.Click the exhibit button.



Reference the output of the two show commands from an edge Ethernet Routing Switch 5520-24T-PWR shown in the exhibit. An untagged frame arrives on port 10, which is configured as an access port. To which VLAN will the packet be forwarded ?

- A. All untagged packets will be placed in the default VLAN (VLAN 1).
- B. All untagged packets will be discarded.
- C. All untagged packets will be placed in VLAN 311.
- D. All untagged packets will be placed in VLAN 312.

Answer: D