



# IT認證考試題庫 專業平臺

考證寶提供最新考古題與模擬試題  
協助您高效通過認證考試

[www.kaozhengpro.com](http://www.kaozhengpro.com)

**Exam** : **9L0-207**

**Title** : Apple Portable Service  
Certification

**Version** : DEMO

1. To utilize Gigabit Ethernet, you must use an Ethernet cable with:

- A. two wires (one pair) present.
- B. four wires (two pairs) present.
- C. six wires (three pairs) present.
- D. eight wires (four pairs) present.

Answer: D

2. A customer states that he cannot access the Internet after connecting his new MacBook Pro to his cable modem via Ethernet. Which of the following is most likely the cause of this problem?

- A. The cable modem needs to be restarted.
- B. AppleTalk is not enabled on the computer's Ethernet port.
- C. The computer is not running the latest version of Mac OS X.
- D. The cable modem's Ethernet port is not compatible with the computer's Ethernet port.

Answer:A

3. A customer states that he cannot transfer files over the Internet after connecting his new MacBook Pro to his cable modem via Ethernet. According to the Apple General Troubleshooting Flowchart, which of the following is the most efficient area to pursue FIRST?

- A. Mac OS X Software Update
- B. Network system preferences
- C. The Internet Connect application
- D. Computer and cable modem compatibility

Answer: B

4. A customer states that she sees an error message appear when she opens her Web browser with her iBook G4 using dial-up Internet service. The message displayed in the Web browser is "The specified server could not be found." When she attempts to access the same Web page a second time the Web page is loaded without a problem. Which of the following is the BEST explanation for what is happening?

- A. The iBook G4 needs to warm up before it can access the Web page.
- B. The Web browser is configured to only access Web pages when reloaded.
- C. The iBook G4 dial-up modem is configured for extra error correction resulting in the delay.

D. The Web browser attempted to load the page before the iBook G4s dial-up modem had finished connecting to the Internet Service Provider.

Answer: D

5. A customer complains that she cannot access the Internet using Safari running on her MacBook. The computer is connected to a cable modem with an Ethernet cable. Which of the following is a PROTOCOL in this scenario?

A. AppleTalk

B. NetBIOS

C. TCP/IP

D. IPX

Answer: C

6. A customer complains that she cannot access the Internet using Safari running on her MacBook. The computer is connected to a cable modem with an Ethernet cable. Which of the following is a LINK in this scenario?

A. Safari

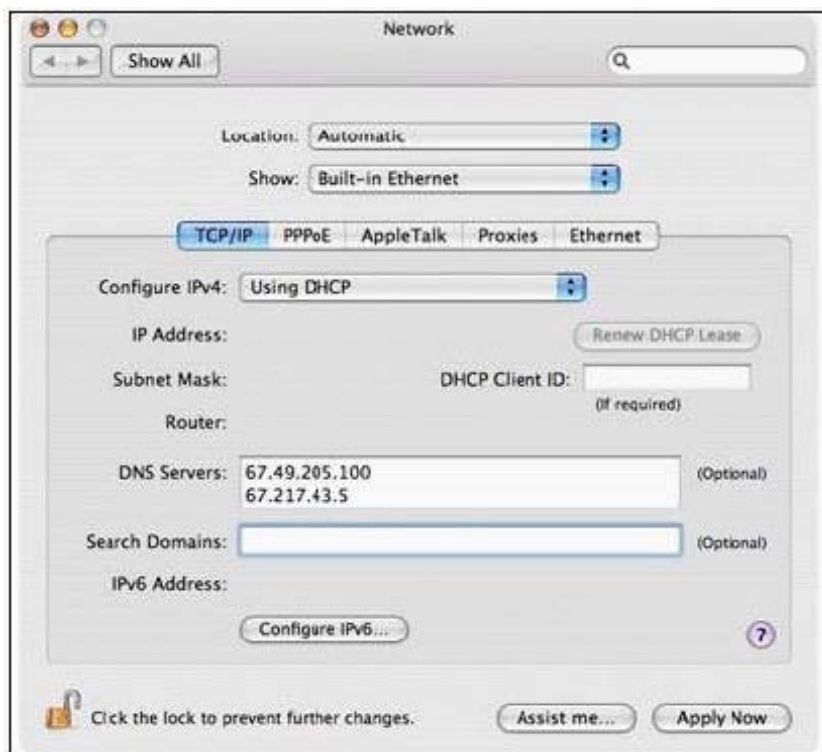
B. TCP/IP

C. Mac mini

D. Ethernet cable

Answer: D

7. Examine the exhibit. Notice the lack of IP address information for built-in Ethernet. What is the most likely cause of this condition?



- A. AppleTalk is active.
- B. Incorrect DNS entry.
- C. No active Ethernet link.
- D. No DHCP server available.

Answer: C

8. A customer complains that she cannot access the Internet using Safari running on her MacBook. The computer is connected to a cable modem with an Ethernet cable. Which of the following is a NODE in this scenario?

- A. TCP/IP
- B. MacBook
- C. Coaxial cable
- D. Ethernet cable

Answer: B

9. Which of the following is NOT a good step to take when working onsite on a computer?

- A. Place parts on the floor.

- B. Use a grounded ESD mat.
- C. Wear a grounded ESD wrist strap.
- D. Check the polarity of the grounded power outlet.

Answer:A

10. Which THREE of the following items are appropriate to use for ESD prevention? SELECT THREE

- A. Metal work surface
- B. CRT discharge tool
- C. Grounded work mat
- D. Wrist strap and cord
- E. Static-shielding bags

Answer: CDE

This document was created with Win2PDF available at <http://www.win2pdf.com>.  
The unregistered version of Win2PDF is for evaluation or non-commercial use only.  
This page will not be added after purchasing Win2PDF.