



IT認證考試題庫 專業平臺

考證寶提供最新考古題與模擬試題
協助您高效通過認證考試

www.kaozhengpro.com

Exam : **C_THR85_2505**

Title : SAP Certified Associate -
Implementation Consultant -
SAP SuccessFactors
Succession Management

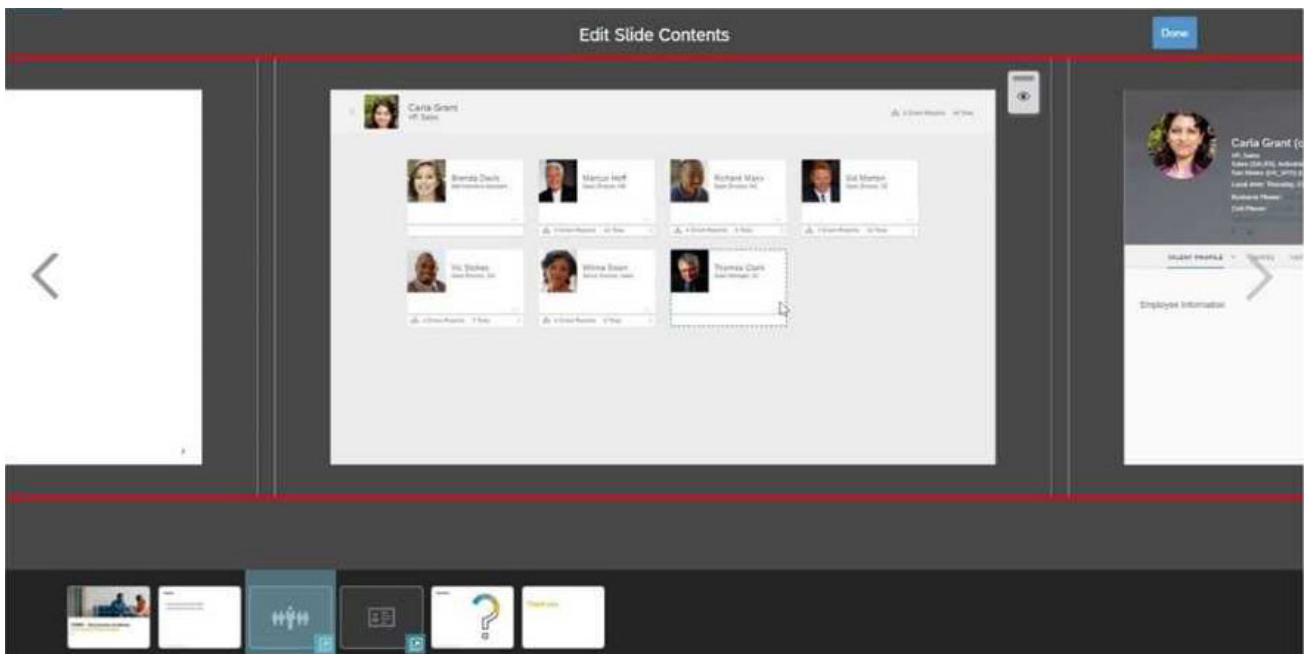
Version : DEMO

1.What must you do to allow a user to view the Nominate button for Talent Search V2? Note: There are 2 correct answers to this question.

- A. Select the checkbox next to the candidate's name after performing a search.
- B. Change the criteria filters when viewing search results.
- C. Modify the Talent Search section of the Succession Data Model.
- D. Grant a user the appropriate permissions to nominate successors.

Answer: A D

2.What can a user accomplish using the eye icon on the screen shown here? Note: There are 2 correct answers to this question.



- A. Show or hide the slide.
- B. Show or hide hotspots.
- C. Show or hide all direct reports.
- D. Show or hide one or more direct reports.

Answer: C D

3.Using the Legacy Position-Based Nomination Method, where can fields be added for the Position dialog?

- A. From the Succession Data Model XML
- B. From Configure Object Definition
- C. From the Succession Org Chart XML
- D. From Employee Files

Answer: C

4.Which of the following features are available when you import background data using the Import Extended User Information feature? Note: There are 2 correct answers to this question.

- A. The data can include many to one data.
- B. The data can include a date field.

- C. The data CANNOT include a user ID.
- D. The import file includes multiple sections of data.

Answer: B D

5.What information can be included in a Trend Data Export file? Note: There are 3 correct answers to this question.

- A. Live profile data
- B. Talent flags
- C. Labels
- D. Calibration session data
- E. Performance form data

Answer: A D E