



KaozhengPro

IT認證考試題庫 專業平臺

考證寶提供最新考古題與模擬試題
協助您高效通過認證考試

www.kaozhengpro.com

Exam : **E20-533**

Title : Networked Storage - SAN
Specialist

Version : Demo

1. What is used for centralized user and group management in a UNIX environment?

- A. NIS
- B. UFS
- C. UDP
- D. NTLM

Answer: A

2. What is stored in a Virtual Data Mover's root file system?

- A. NTP
- B. Local Groups
- C. Usermapper configuration
- D. FTP root directory

Answer: B

3. What is one characteristic of SnapSure?

- A. can mount a checkpoint on any Data Mover
- B. multiple checkpoints are linked in chronological order
- C. checkpoint is independent of its Production File System
- D. checkpoint shares the same volume as the Production File System

Answer: B

4. What is used in a UNIX environment to mount a remote file system?

- A. NFS
- B. UFS
- C. CIFS
- D. VxFS

Answer: A

5. When the getreason command is used, which status identifies that a Data Mover needs to be replaced?

- A. contacted
- B. connected
- C. dos booted
- D. powered off

Answer: D

6. Which protocols are available when configuring DNS on a Data Mover?

- A. TCP and IP
- B. UDP and IP

- C. TCP and UDP
- D. UDP and ICMP

Answer: C

7. A NAS solution is required that includes high availability and always available network connections. The Ethernet switch is made by Typhoon Data Networks and is IEEE compliant. Which EMC NAS networking solution must be implemented?

- A. DHCP
- B. VLAN
- C. LACP
- D. EthernetChannel

Answer: C

8. Which industry standard network backup protocol is supported on Celerra?

- A. Simple Data Backup Protocol
- B. Network Data Backup Protocol
- C. Direct Connect Backup Protocol
- D. Network Data Management Protocol

Answer: D

9. Which command is used to create a new user on the Data Mover for FTP?

- A. nas_user
- B. nas_newuser
- C. server_user
- D. server_ftpuser

Answer: C

10. On which volume type is a file system created?

- A. Celerra disk volume
- B. Celerra slice volume
- C. Celerra meta volume
- D. Celerra stripe volume

Answer: C

11. What are two [2] approved uses of EMC's implementation of Cisco Systems Fast EthernetChannel (Celerra Trunking)?

- A. Bandwidth Aggregation
- B. Fault Tolerance among single switch ports
- C. Fault Tolerance between multiple switch ports

D. Combining multiple physical interfaces into a logical interface

Answer: BD

12. Which storage template is available in a NS Integrated system that uses ATA physical drives?

A. CX_Standard_Raid_5

B. CX_All_4Plus1_Raid_5

C. ATA_CX_Standard_Raid_1

D. ATA_RAID3_HS_4+1_8+1

Answer: D

13. Which assigns the Fibre Channel WWN?

A. Name server

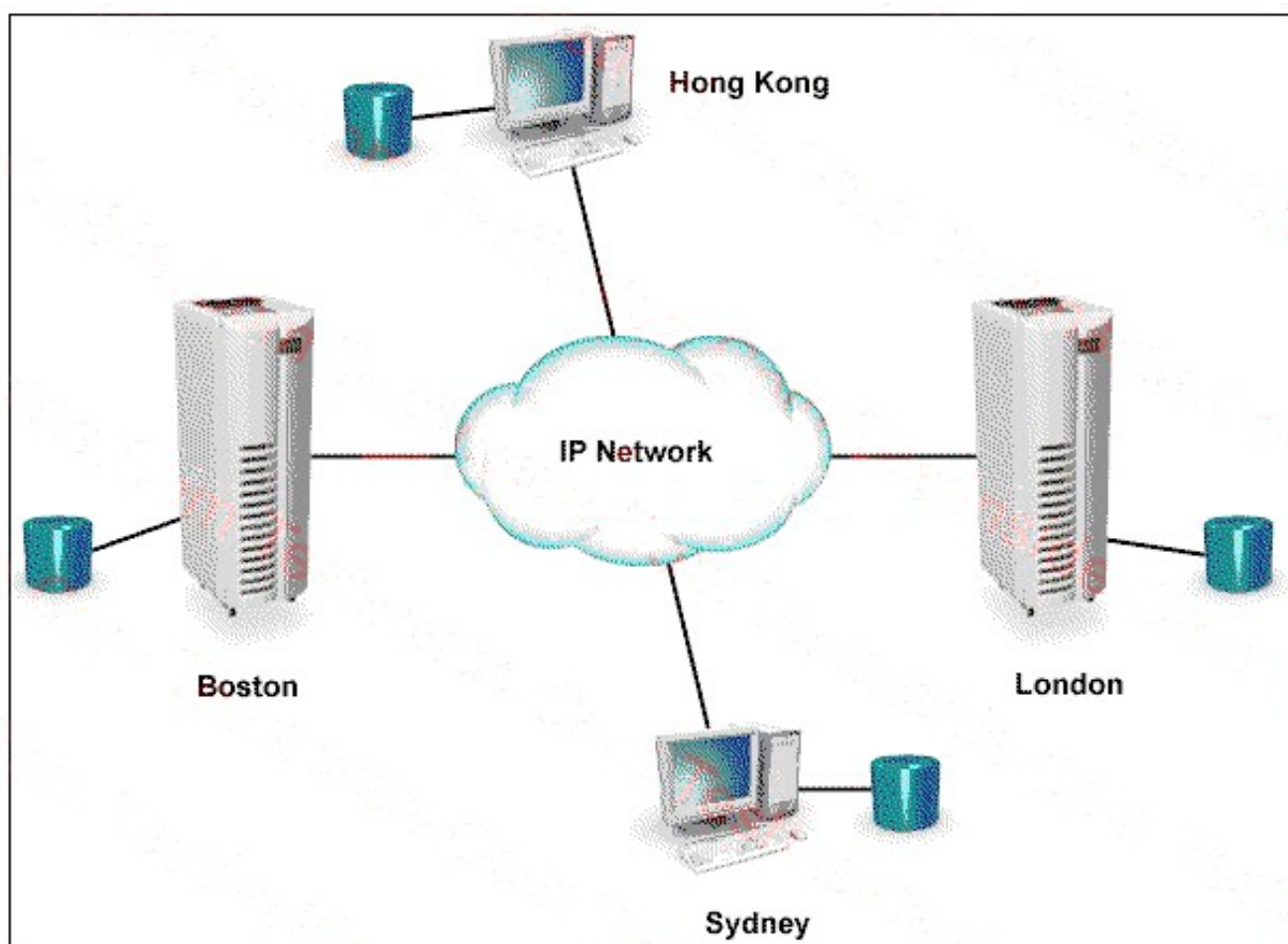
B. Operating system

C. System Administrator

D. Hardware manufacturer

Answer: D

14. Click the Exhibit button.



Two Celerras are located in London and Boston. A NAS solution is required that maintains a copy of the

Celerra data on a Sun server in Hong Kong, and an HP server in Sydney. Which NAS solution is appropriate?

- A. FarCopy
- B. Replicator
- C. OnCourse
- D. Symmetrix Remote Data Facility

Answer: C

15. Which statement is correct about Virtual Data Movers [VDMs]?

- A. VDMs can change from UNICODE to ASCII
- B. VDMs can be used as default CIFS servers
- C. VDMs cannot use shared logical interfaces
- D. VDMs can support two CIFS servers with the same computer name

Answer: C

16. What is one function of the Control Station?

- A. Allows you to configure CLARiiON LUNs
- B. Allows you to manage the CNS-14 and everything attached to it
- C. Enables you to install and upgrade software on the storage system
- D. Provides installation, configuration and management features for the CNS-14

Answer: D

17. What is the default type of a Celerra file system?

- A. ufs
- B. udfs
- C. mgfs
- D. rawfs

Answer: B

18. What is a benefit of Celerra Data Migration Service (CDMS)?

- A. Minimal service disruption
- B. Manual migration of all old data
- C. Automatic data defragmentation
- D. Automatic restoration of multi-protocol permissions

Answer: A

19. What are two [2] accurate statements about Virtual Data Movers [VDMs]?

- A. support NFS only
- B. support CIFS and NFS

- C. do not support CDMS
- D. do not support CPU/memory resource allocation

Answer: CD

20. What is the full path for the UNIX "hosts" file?

- A. /etc/hosts
- B. /unix/hosts
- C. C:\etc\hosts
- D. C:\winnt\system32\drivers\etc\hosts

Answer: A