



KaozhengPro

IT認證考試題庫 專業平臺

考證寶提供最新考古題與模擬試題
協助您高效通過認證考試

www.kaozhengpro.com

Exam: **HP0-Y28**

Title : **HP ProCurve ASE Mobility
2010 Delta Exam**

Version : DEMO

1. Click the Exhibit button.

Summary

Controlled APs

- Synchronized 1
- Unsynchronized 1
- Detected 2
- Configured 2

Network Tree

- Service Controller
 - VSCs
 - ProCurve01
 - SSID01
 - Controlled APs**
 - Default Group
 - Confidential
 - Public Access
 - Public

Base Group: All | Configured APs

Number of displayed access points: 2

Detected	AP name	Serial number	Group name	Product	Creation mode	Already seen
●	Confidential	K089-00123	Default Group	MSM335	Discovered	Yes
●	Public	K089-00103	Public Access	MSM335	Discovered	Yes

Add

What must you do to enable the AP named "Confidential" to function properly in this mobility solution?

- A. Enable the radio.
- B. Configure a management IP address.
- C. Synchronize the configuration.
- D. Upgrade the firmware.

Answer: C

2. Click Next or More to continue.

Click the Task button.

Match each security technology with its description.

Technology	Description
WEP	(place here)
WPA	(place here)
WPA2	(place here)

implements 802.1X/EAP and TKIP

supports only AES encryption

based on RC4 encryption algorithm

Done

Match each security technology with its description.

Answer:

Match each security technology with its description.

Technology	Description
WEP	based on RC4 encryption algorithm
WPA	implements 802.1X/EAP and TKIP
WPA2	supports only AES encryption

implements 802.1X/EAP and TKIP

supports only AES encryption

based on RC4 encryption algorithm

Done

3. You are installing PCM+, Network Immunity Manager (NIM), and Identity Driven Manager (IDM) for evaluation at a customer site. When must a license be added to the PCM+ installation? (Select two.)

- A. when the customer plans to use IDM immediately after installation
- B. when the customer plans to use PCM+ to manage wireless and wired devices

- C. when the customer plans to use PCM+ to manage more than 350 devices
- D. when the customer plans to continue using PCM+ after the 60-day trial period
- E. when the customer plans to use NIM immediately after installation

Answer: CD

4. What information is required to create license keys for PCM+ and its plug-ins? (Select two.)

- A. Registration ID
- B. PCM+ Update ID
- C. Hardware ID
- D. Serial Number for PCM+

Answer: AC

5. You are assisting a customer who needs to purchase licenses to use Network Immunity Manager (NIM) after the NIM trial period has expired. How many NIM licenses does the customer require?

- A. one for each PCM+ device license
- B. one for each wireless device that supports NIM
- C. one for each ProCurve switch that supports Virus Throttling
- D. one for each switch or access point

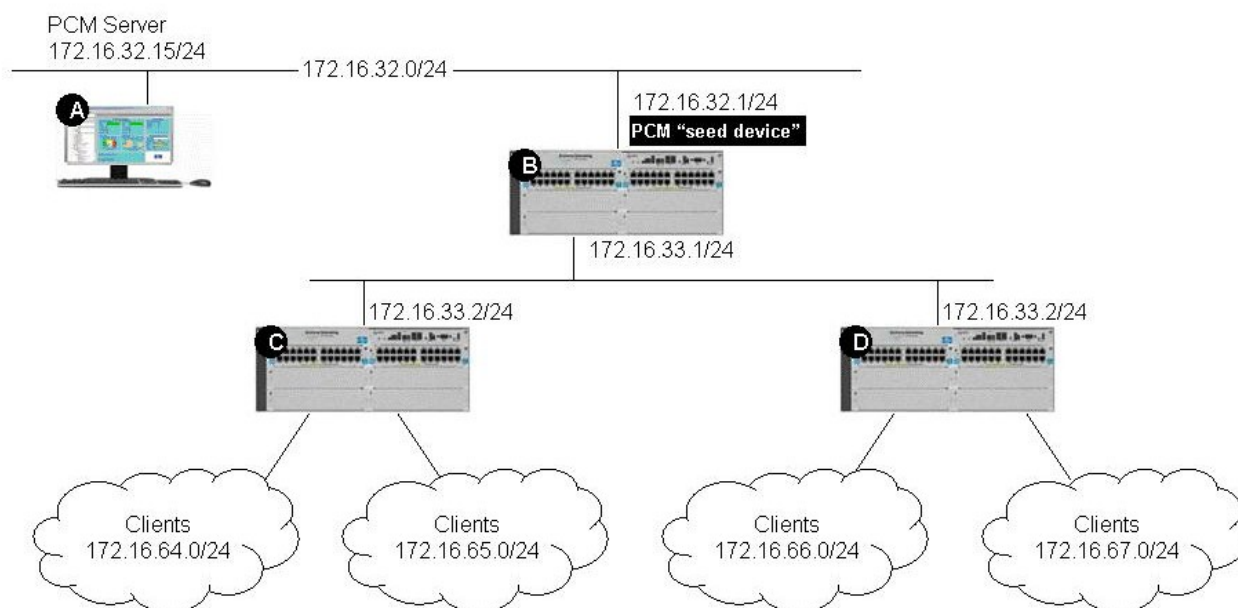
Answer: A

6. Which PCM+ feature enables Network Immunity Manager (NIM) to detect the anomalous or threatening behavior of a client on the network?

- A. Identity Manager
- B. Policy Management
- C. Agent Manager
- D. Traffic Monitoring

Answer: D

7. Click the Exhibit button.

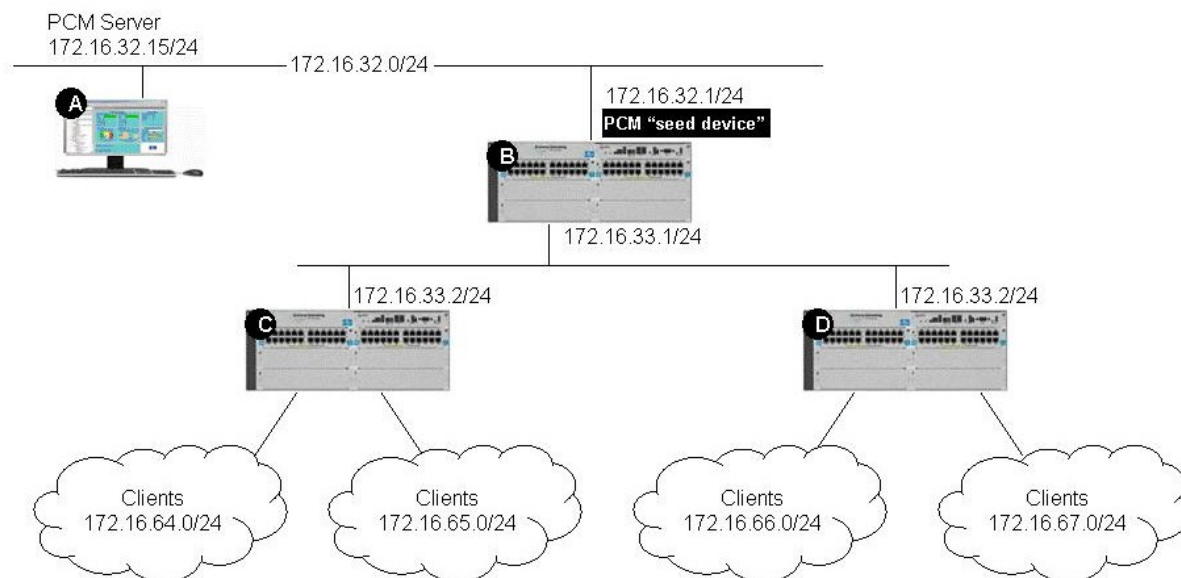


You have installed PCM+ and all of its plug-in applications on the network shown in the exhibit. You have not performed any additional configuration. Which device(s) will be included in the network map when you log in to PCM+ for the first time?

- A. switch B only
- B. switch C only
- C. switch D only
- D. server A and switch B
- E. switches B, C, and D

Answer: A

8. Click the Exhibit button.



You have installed PCM+ and all of its plug-in applications on this network. You have not performed any additional configuration. How many subnets will be displayed in the navigation tree when you log in to PCM+ for the first time?

- A. 1
- B. 2
- C. 4
- D. 6

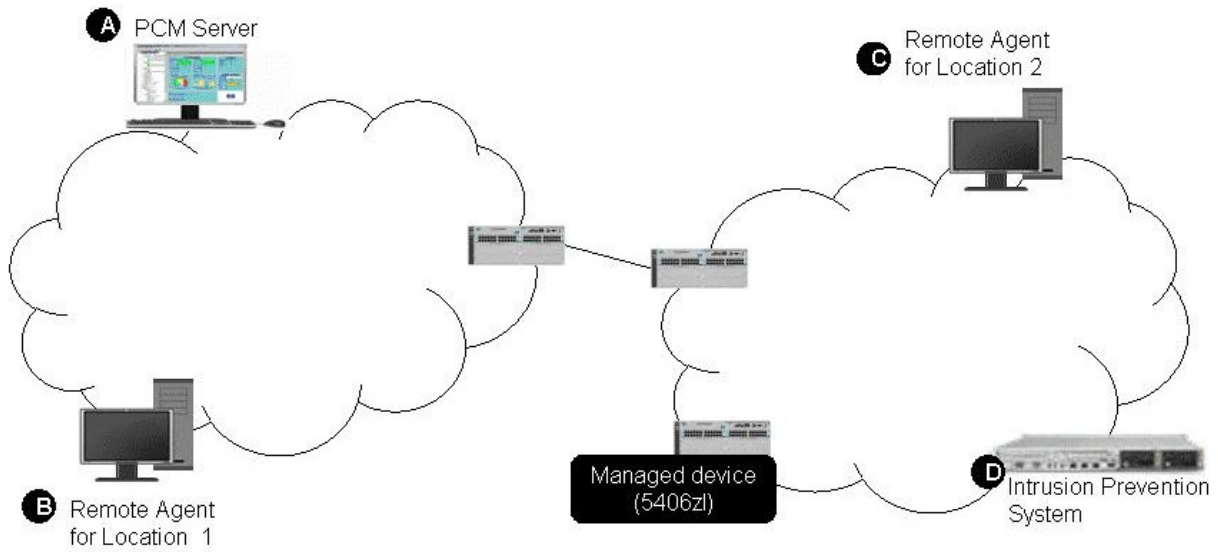
Answer: A

9. You must troubleshoot a PCM+ installation at a customer site. Which issue could indicate a mismatch between the SNMP read community configured on PCM+ and that configured on a device?

- A. PCM+ cannot collect traffic statistics.
- B. PCM+ cannot scan the device configuration.
- C. PCM+ cannot discover the device.
- D. PCM+ cannot change the device's configuration.

Answer: C

10. Click the Exhibit button.



The HP ProCurve 5406zl switch labeled as Managed device?has experienced a PCM+ Event that must be sent as a trap. If PCM+ and the devices are configured correctly, which device will receive the trap?

- A. PCM+ server
- B. Remote Agent for Location 1
- C. Remote Agent for Location 2
- D. Intrusion Prevention System at Location 2

Answer: C