



IT認證考試題庫 專業平臺

考證寶提供最新考古題與模擬試題
協助您高效通過認證考試

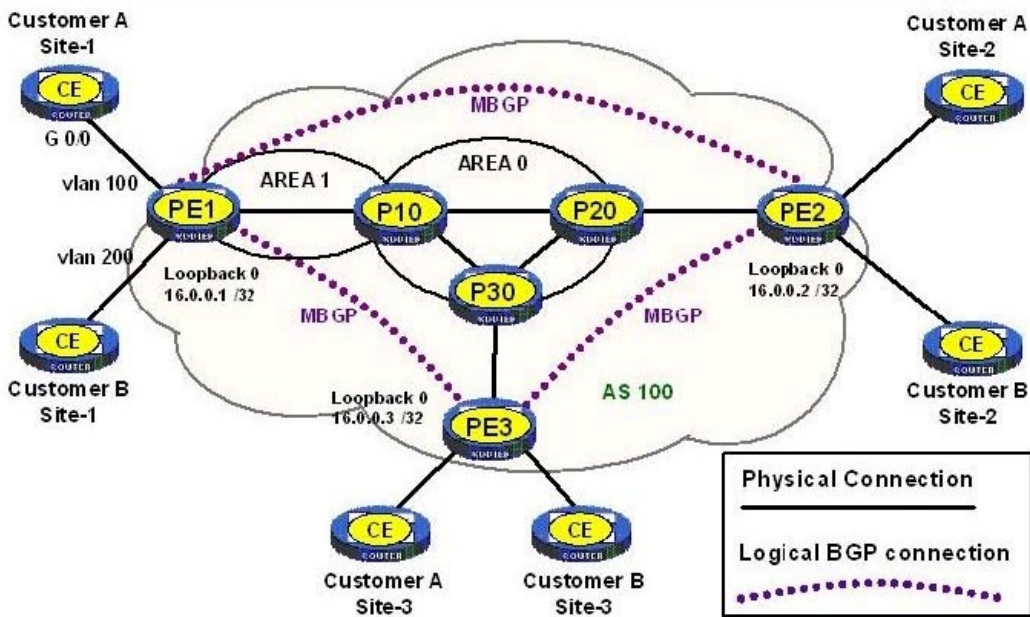
www.kaozhengpro.com

Exam : **HP0-Y36**

Title : Deploying HP Enterprise
Networks

Version : Demo

1.Click the Exhibit button.



A provider of MPLS services configures MPLS Layer-3 VPN services for two customers. Each customer has three branch offices that will be interconnected. The address blocks chosen by the customers for each site are:

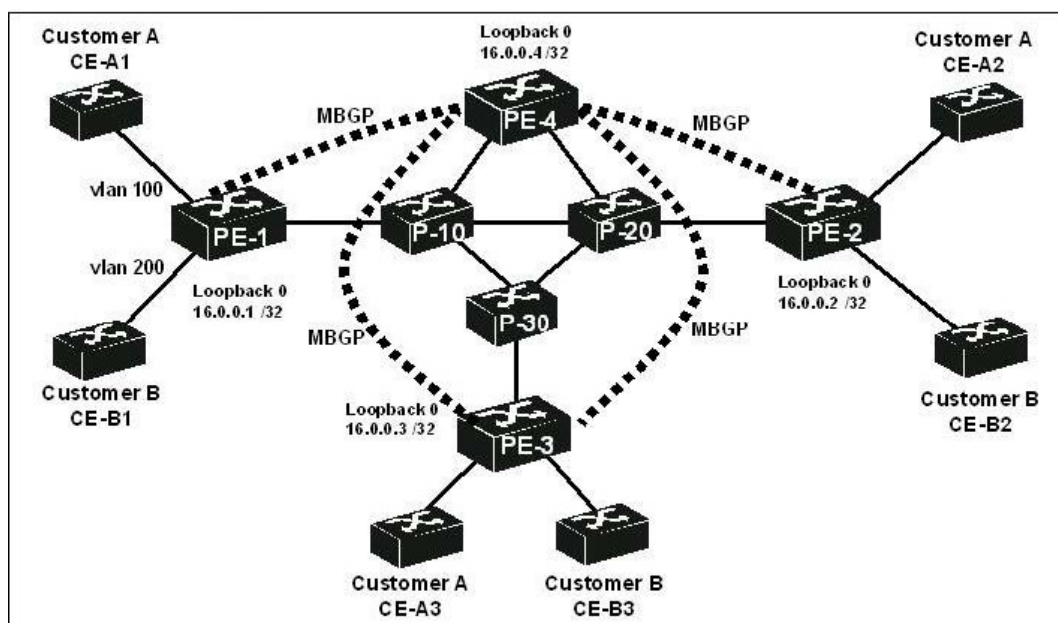
Customer	Site-1	Site-2	Site-3
A	10.1.0.0 /16	10.2.0.0 /16	10.3.0.0 /16
B	10.1.0.0 /16	10.2.0.0 /16	10.3.0.0 /16

The provider uses OSPF as its IGP with the Loopback 0 addresses shown as the OSPF router-id and the MPLS LSR-ID. Customer A Site 1 successfully pings Customer A Site 2. This ICMP echo request is captured on the Ethernet segment between routers P-10 and P-20. What is found on this packet capture? (Select two.)

- A. MPLS VPN label
- B. VPN target
- C. MPLS outer label corresponding to the LSR-ID of P-20
- D. MPLS outer label corresponding to FEC 16.0.0.2
- E. route distinguisher

Answer: A,D

2.Click the Exhibit button.



A provider of MPLS services configures MPLS Layer-3 VPN services for two customers. Each customer has three branch offices that will be interconnected. The address blocks chosen by the customers for each site are:

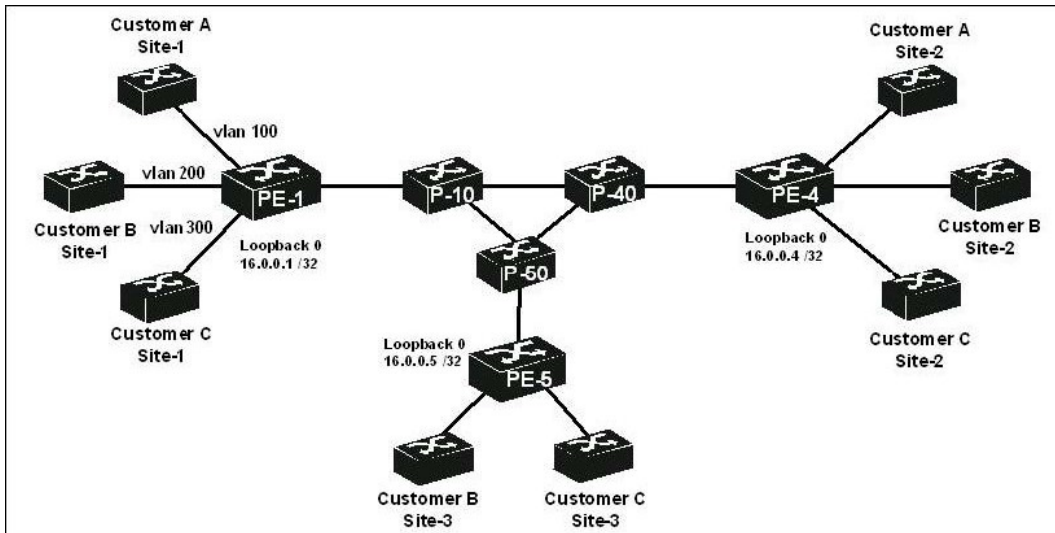
Customer	VPN-instance	Site-1	Site-2	Site-3
A	Cust-A	10.1.0.0 /16	10.2.0.0 /16	10.3.0.0 /16
B	Cust-B	10.1.0.0 /16	10.2.0.0 /16	10.3.0.0 /16

The provider has established only four Multi-Protocol BGP peers as shown in the exhibit. PE-4 has no customer connections. Neither MPLS L3VPN is functional. Which configuration steps are required if this topology is to be operational for both customers.? (Select two.)

- A. Create VPN instances Customer A and Customer B on PE-4.
- B. Configure PE-4 as a route-reflector within the bgp l3vpn-family.
- C. Configure PE-4 as a route-reflector within the ipv4-family vpnv4.
- D. Configure PE-4 as a route-reflector within the ipv4-family vpn-instance Cust-A and vpn-instance Customer B.
- E. Configure PE-4 as a bgp route-reflector.
- F. Configure MBGP peers for P-10, P-20, and P-30.

Answer: A,C

3.Click the Exhibit button.



A provider of MPLS services offers multiple types of MPLS-based VPNs to its customers. Provider Edge router PE-1 directly connects to the following three customers:

Customer	MPLS service	Number of Sites
A	MPLS L2VPN Martini mode	2
B	VPLS - Kompella mode	3
C	MPLS L3VPN	3

What is the minimum number of LDP peers established on Router PE-1?

- A. 1
- B. 2
- C. 3
- D. 4
- E. 5

Answer: B

4. Which technology in an MPLS L2VPN can provide ordered delivery of Ethernet frames?

- A. TCP-based L2VPN
- B. Control Word
- C. Ethernet raw access circuit
- D. VLAN pseudowire class
- E. MPLS EXP bits

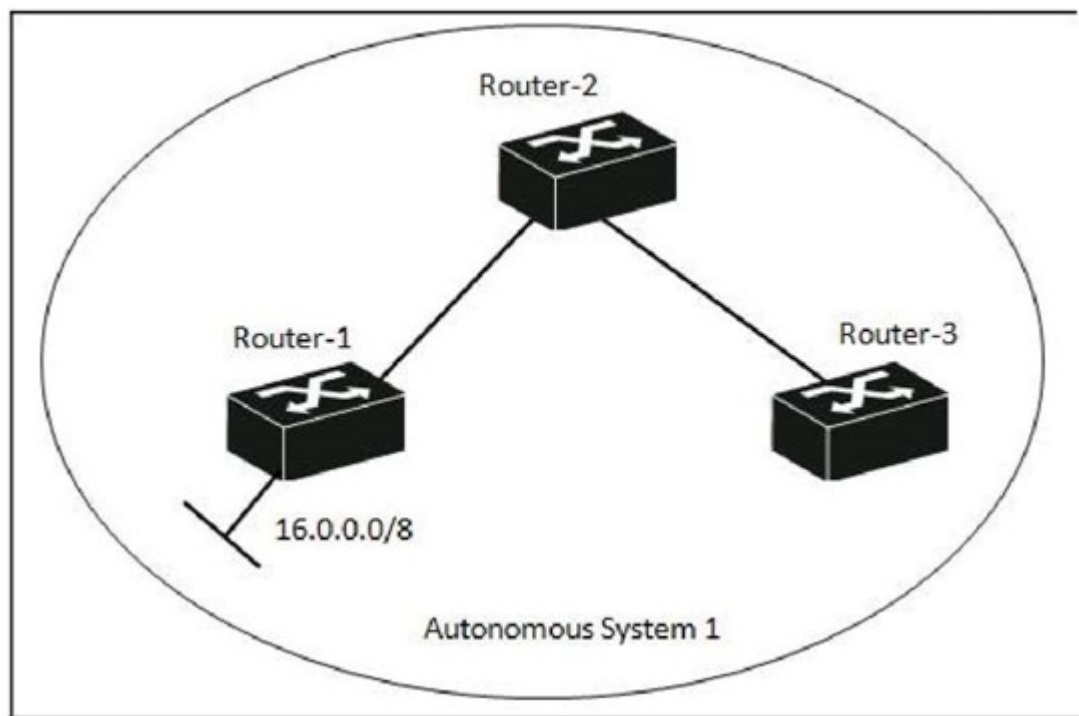
Answer: B

5. Which BGP attributes must be present in a BGP routing update? (Select three.)

- A. community
- B. MED
- C. origin type
- D. local preference
- E. AS path
- F. next hop

Answer: C,E,F

6. Click the Exhibit button.



Router-1 and Router-2 are BGP peers. Router-2 and Router-3 are BGP peers. However, Router-3 has not learned the 16.0.0.0/8 BGP route. How can you resolve this issue? (Select two.)

- A. Enable IGP synchronization on all routers.
- B. Prepend AS1 to the 16.0.0.0/8 route on Router-1.
- C. Enable BGP peering between Router-1 and Router-3.
- D. Adjust the local preference of 16.0.0.0/8 on Router-1.
- E. Configure Router-2 as a route reflector and Router-1 and Router-3 as clients.
- F. Establish a physical link between Router-1 and Router-3.

Answer: C,E

7. What can be included in BGP or multi-protocol BGP Network Layer Reachability Information (NLRI)? (Select three.)

- A. AS 65001
- B. 10.0.0.0 /9
- C. MED
- D. Remote LDP Session
- E. BGP ORF
- F. VPN Target
- G. VPLS Label Block
- H. 6500:301:192.168.0.0 /16

Answer: B,G,H

8. Which characteristics of a Circuit Cross Connect (CCC) L2VPN distinguish it from the Martini or Kompella versions? (Select two.)

- A. It requires a stack of three MPLS labels.
- B. It includes exactly two endpoints of the VPN.
- C. It can operate with fewer than two MPLS labels.
- D. It does not require any Label signaling.

Answer: C,D

9. In the configuration of a Martini version L2VPN on two PE routers, which parameter must be identical?

- A. S-VID
- B. PW-ID
- C. VLAN-ID
- D. Service Instance number
- E. VPN-Target
- F. Remote LDP Peer IP address

Answer: B

10. Which parameters must be configured on two PE routers to provision an Ethernet L2VPN in Martini mode? (Select four.)

- A. PW-ID
- B. LDP Remote Peer
- C. VPN Instance
- D. Service Instance
- E. S-VID
- F. L2VPN Address Family
- G. Route Distinguisher
- H. IP Binding

Answer: A,B,D,E