



KaozhengPro

IT認證考試題庫 專業平臺

考證寶提供最新考古題與模擬試題
協助您高效通過認證考試

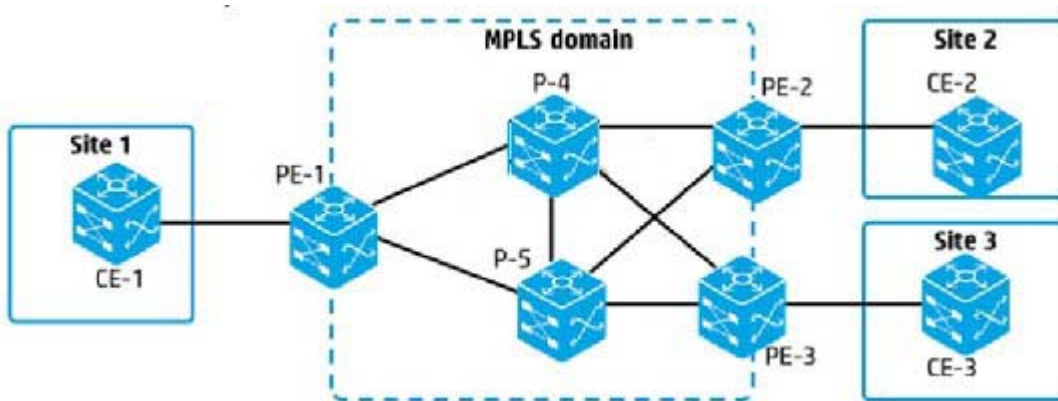
www.kaozhengpro.com

Exam : **HP2-Z34**

Title : Building HP FlexFabric Data
Centers

Version : DEMO

1.Refer to the exhibit



An MPLS VPLS solution (non-hierarchical) will connect the sites shown in the exhibit Which pseudo wire (PW) connections must the administrator configure?

- A. A full mesh of PWs between every PE router that connects to a site and every P router between them
- B. A hub-and-spoke set of PWs between one P router and all PE routers that connect to a site
- C. A full mesh of PWs between every PE router that connects to a site
- D. A hub-and-spoke set of PWs between one PE router and other PE routers that connect to a site

Answer: D

2.An administrator is configuring an HP switch to run SPBM. Which Spanning Tree Protocol (STP) configuration is required?

- A. Disable STP.
- B. Ensure that the switch with the lowest IS-IS router ID has the lowest bridge priority.
- C. Set the spanning tree mode to ECT.
- D. Map all B-VLANs to MSTP instance 4092

Answer: D

3.An administrator creates two VPN instances on an HP Comware switch, in addition to the public instance. The switch implements routing protocols and MPLS. Which statement is correct about the routing tables and Label Forwarding Information Bases (LFIBs) maintained by the switch?

- A. The switch uses a single routing table and maintains a separate LFIB for each VPN instance
- B. The switch maintains a separate routing table and LFIB for each VPN instance, but the public tables automatically include entries from the other instances.
- C. The switch maintains a separate routing table and LFIB for each VPN instance.
- D. The switch maintains a separate routing table for each VPN instance and uses a single LFIB

Answer: D

Explanation:[http://www.h3c.com/portal/Technical_Support Documents/Technical_Documents/Security_Products/H3C_SecPath_F1000-E/Configuration/Operation_Manual/H3C_SecPath_High-End_OM\(F3169_F3207\)-5PW106/06/201109/725907_1285_0.htm](http://www.h3c.com/portal/Technical_Support Documents/Technical_Documents/Security_Products/H3C_SecPath_F1000-E/Configuration/Operation_Manual/H3C_SecPath_High-End_OM(F3169_F3207)-5PW106/06/201109/725907_1285_0.htm)(VPN instance, second para)

4.An HP Comware switch uses the MDC feature and has two MDCs defined. Administrators want MDC 1 and MDC 2 to be able to exchange traffic. How should the administrators complete the configuration?

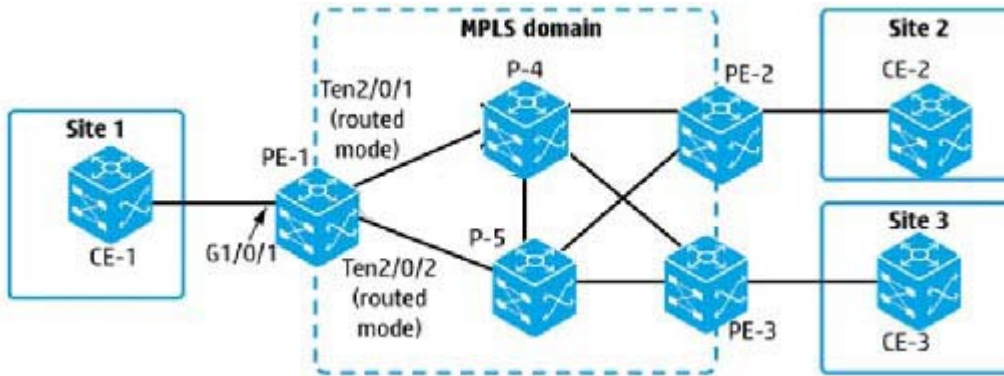
- A. Create a virtual port with the same name on MDC 1 and MDC 2.
- B. Create a virtual port on MDC 0 and tag that port for the MDC 1 and MDC 2 management

VLANs

- C. Connect a physical port that belongs to MDC 1 to a physical port that belongs to MDC 2
- D. Configure MDC 0 to permit data exchange and add a backplane mapping between MDC 1 and MDC 2.

Answer: A

5.Refer to the exhibit



An administrator is setting up an MPLS Layer 2 VPN between customer Sites 1 and 2 and is defining the pseudo wire (PW) ID for this purpose. How should the PW IDs and router values be configured?

- A. Set the PW ID to a different value on PE-1 and PE-2 The value on each router must match the label advertised by the peer for its loopback address.
- B. Set the PW ID to a different value on PE-1 and PE-2 Also use a different value from other PWs on these routers.
- C. Set the PW ID to the same value on PE-1 and PE-2. Use a different value from other PWs on these routers.
- D. Set the PW ID to the same value on PE-1 and PE-2. The value on each router must match the S-VLAN ID for the associated service instance.

Answer: D