



# IT認證考試題庫 專業平臺

考證寶提供最新考古題與模擬試題  
協助您高效通過認證考試

[www.kaozhengpro.com](http://www.kaozhengpro.com)

**Exam** : **QSSA2018**

**Title** : Qlik Sense System  
Administrator Certification  
Exam – June 2018 Release

**Version** : DEMO

1. A company decides to move servers from on premise to a cloud. A system administrator performs a backup, restore, and brings the server online. When users open the app on the hub, they get an error message indicating the app could not be found.

The system administrator confirms that apps are present in the required location and NO changes have been made.

What could be causing the issue?

- A. Shared persistence path is NOT reachable
- B. Synchronized persistence is in place
- C. The app has been moved from one stream to another
- D. The security rules were broken when the servers were migrated

**Answer: A**

2. Refer to the exhibit.

Reload License Monitor	License Monitor	Reload	Yes	✗	Failed
Reload Operations Monitor	Operations Monitor	Reload	Yes	✗	Failed

Qlik Sense Enterprise is deployed in a multi-node environment. The environment is separated into a central, a scheduler, and a consumer node. A system administrator routinely performs updates and validates that the system accepts the updates correctly.

The system administrator notices that reloads of the License Monitor and Operations Monitor fail with this error message:

QVX\_UNEXPECTED\_END\_OF\_DATA: Failed to connect to server

What should the system administrator do to resolve this issue?

- A. 1. Open the QMC and go to Data connections
- 2. Modify all qrs\_data connections and change the security for DataConnection\_\* to Read access
- 3. Change the owner on all qrs\_data connections from INTERNAL\sa\_repository to the Qlik Sense service account
- 4. Reboot the server
- 5. Open the QMC and reload the monitoring apps
- B. 1. Open the QMC and go to Data connections
- 2. Delete the qrs\_data connections
- 3. Perform a Qlik Sense Enterprise repair installation
- 4. Reboot the server
- 5. Open the QMC and reload the monitoring apps
- C. 1. Open the QMC and go to Data connections
- 2. Delete the qrs\_data connections
- 3. Manually import the latest License Monitor and Operations Monitor
- 4. Remove the old License Monitor and Operations Monitor
- 5. Open the QMC and reload the monitoring apps
- D. 1. Open the QMC and go to Data connections
- 2. Delete the qrs\_data connections, and recreate them manually
- 3. Manually import the latest License Monitor and Operations Monitor
- 4. Change the owner on all qrs\_data connections from INTERNAL\sa\_repository to the Qlik Sense service account

5. Open the QMC and reload the monitoring apps

**Answer: A**

**Explanation:**

Reference: <https://support.qlik.com/articles/000033150>

3. A single-node Qlik Sense environment has all services up and running. Users report apps and sheets are slow to open.

A system administrator works remotely and does NOT have access to the shared file system for the environment. The system administrator's computer can make requests to the Qlik Sense Repository Service. Due to the system performance issues, a system administrator can NOT run any new reloads. The system administrator receives a warning email about high RAM usage on the server.

Which step should the system administrator take to troubleshoot this issue?

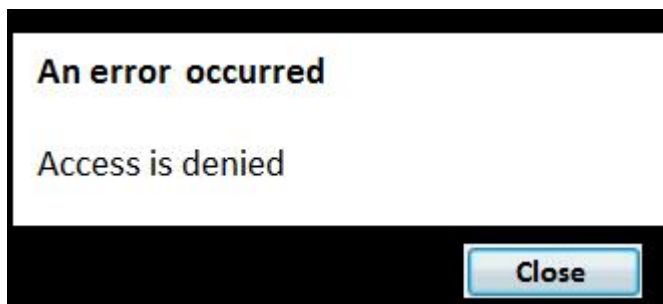
- A. Request the "http://<server.domain.com>/engine/performancecheck/" API
- B. Access the server remotely and inspect the logs in %ProgramData%\Qlik\Sense\Log\Engine
- C. Request the "https://<server.domain.com>/engine/healthcheck/" API
- D. Request the "https://<server.domain.com>/qmc/audit" API

**Answer: B**

**Explanation:**

Reference: <https://help.qlik.com/en-US/sense-admin/November2019/pdf/Deploy%20Qlik%20Sense%20Enterprise%20on%20Windows.pdf>

4. Refer to the exhibit.



A user from the HR department has access to the HR stream.

The rule on the stream is:

((user.group!="Delivery" and user.group!="Account Manager" and user.userDirectory!="Externals"))

When the user tries to open the app in the HR stream, the error in the exhibit displays.

What is causing this error?

- A. The stream rule 'user.userDirectory' is excluding the user
- B. The app contains section access that does NOT include the HR stream security rule
- C. The HR group is NOT included in the rule to access the stream and the app
- D. The app contains section access that does NOT include the user

**Answer: C**

5. A system administrator creates a custom property called "dept" and assigns it to users and apps. The value of the custom property are department names such as Accounting, Finance, and IT. Users with the same value for "dept" can see and edit each other's apps. Users with different values for the property

should NOT see each other's apps.

Which security rule should the administrator use to meet this requirement?

A. Resource: App\_\*, Stream\_\*

Conditions: user.@dept=app.@dept

B. Resource: App\_\*

Conditions: user.@dept=resource.id

C. Resource: App\_\*

Conditions: user.@dept=resource.@dept

D. Resource: App\_\*

Conditions: user.@dept=resource.description

**Answer: A**