



IT認證考試題庫 專業平臺

考證寶提供最新考古題與模擬試題
協助您高效通過認證考試

www.kaozhengpro.com

Exam : **VCPC510**

Title : VMware Certified
Professional on vCloud

Version : Demo

1. Click the Exhibit button.

The screenshot shows a configuration window with three tabs: 'Name and Description', 'Network Specification', and 'Syslog Server Settings'. The 'Network Specification' tab is active. It contains the following fields:

- Network mask: 255.255.255.0 *
- Default gateway: 192.168.20.254 *
- Primary DNS: [Empty]
- Secondary DNS: [Empty]
- DNS suffix: [Empty]

Static IP pool:

Enter an IP range (format: 192.168.1.2 - 192.168.1.100) or IP address and click Add.

[Empty input field] [Add]

192.168.20.1 - 192.168.20.100 [Modify]

[Empty input field] [Remove]

Total: 100

[OK] [Cancel]

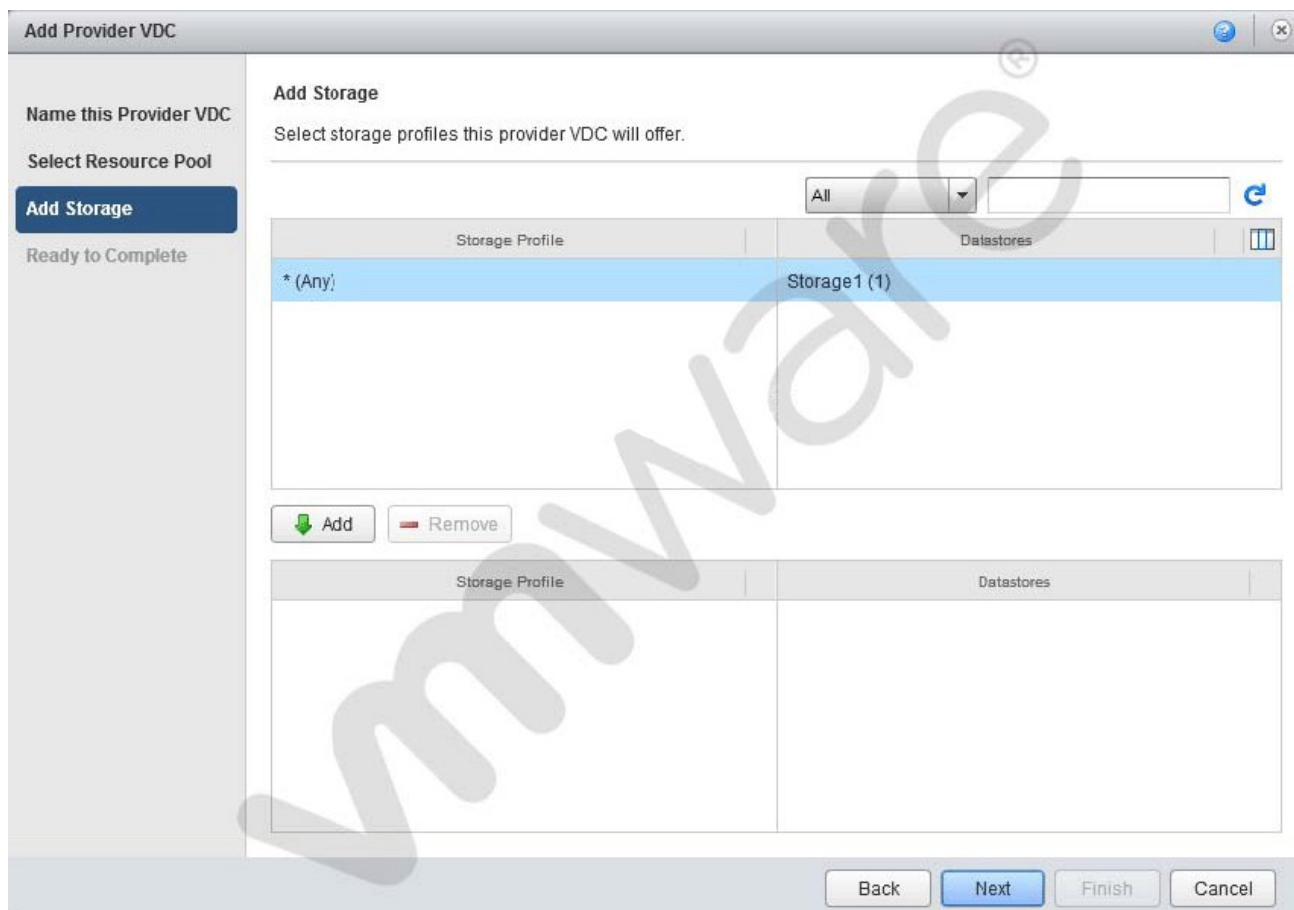
An administrator needs to modify the range of static IP addresses available to the network in question. The administrator clicks on the Network Specification tab and is presented the options shown in the exhibit, which cannot be selected.

What is a possible cause for this issue?

- A. The administrator does not have the vShield Manager role.
- B. The administrator does not have the organization administrator role.
- C. The vShield Edge appliance has been powered off and is inaccessible.
- D. The network in question is a direct connected external organization network.

Answer: D

2. Click the Exhibit button.



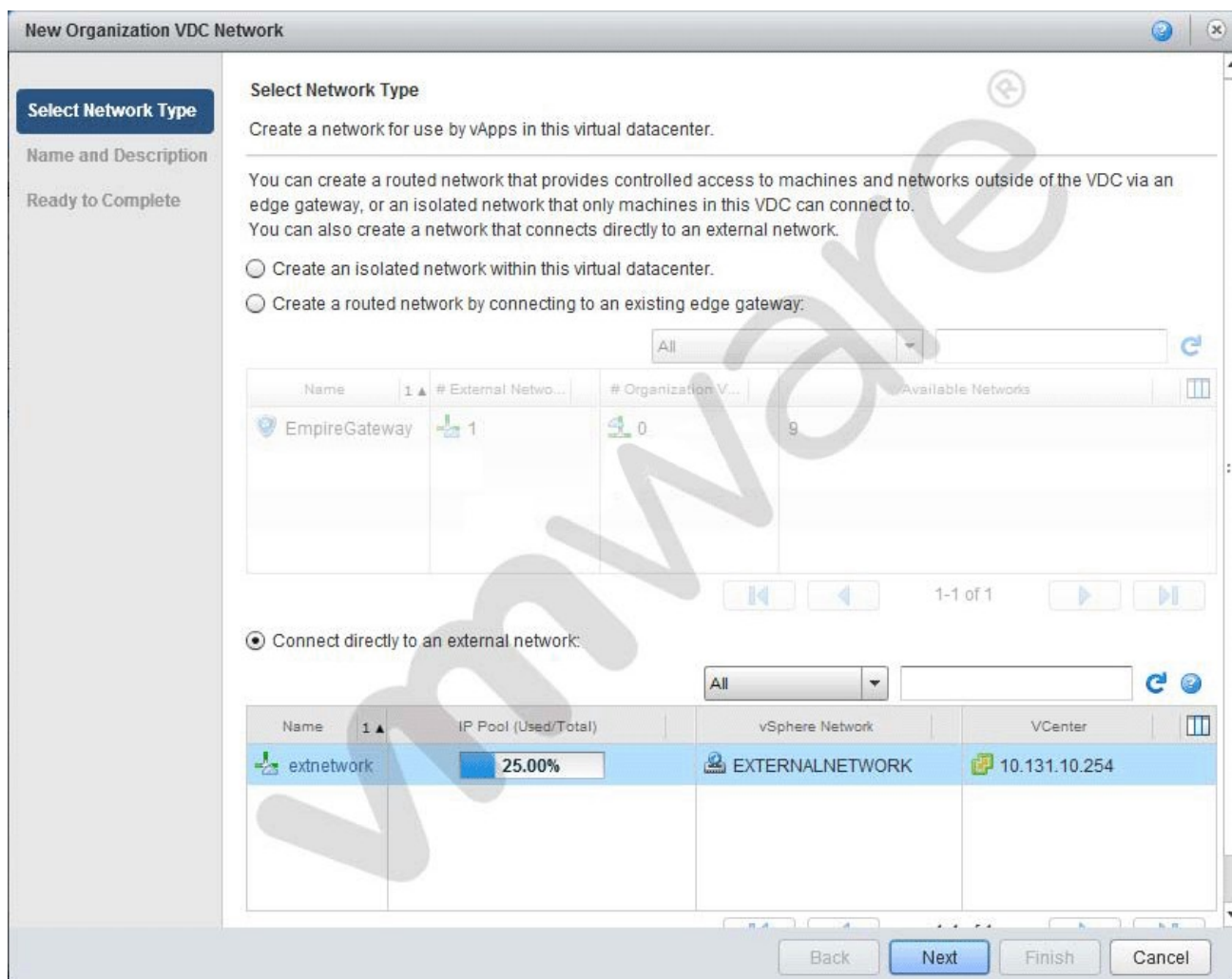
When adding storage in the Provider vDC wizard you don't see the intended Storage Profile.

What could be the cause?

- A. The Storage Profile has not been created in vCenter.
- B. The Storage Profile has been named with more than 5 characters.
- C. The Storage Profile is set by the Org vDC wizard
- D. The Provider vDC combines all storage profiles into *(Any)

Answer: A

3. Click the Exhibit button.

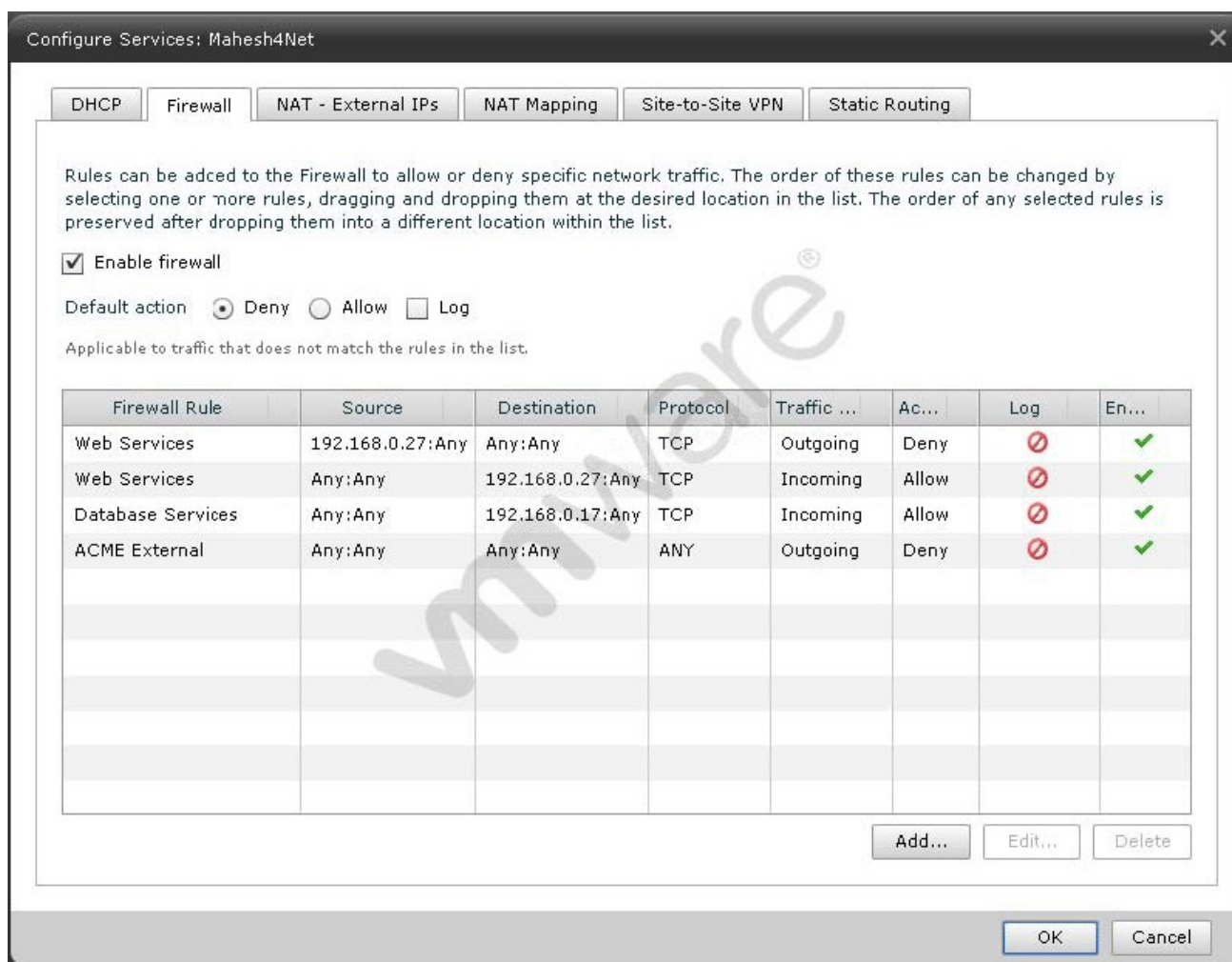


Which External Organization Network type is being created in the Organization Network Creation Wizard?

- A. External port group-backed
- B. External VLAN-backed
- C. External Direct
- D. External Routed

Answer: C

4. Click the Exhibit button.



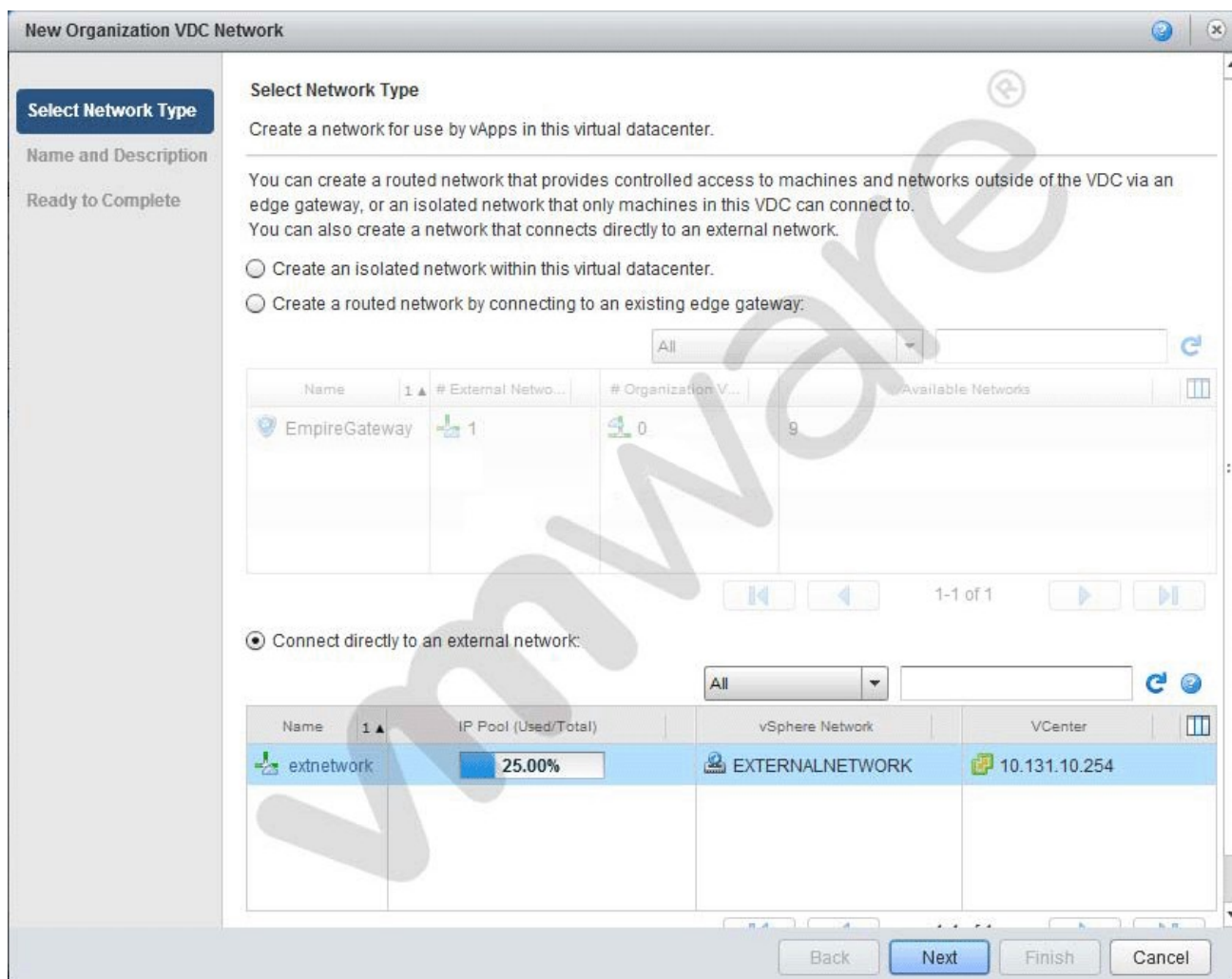
ACME has a virtual machine with an IP address of 192.168.0.51. It is running an SMTP mail service and is unable to communicate from the assigned network. The network is an External Routed network with the firewall rules displayed in the exhibit.

Which configuration change would correct this behavior?

- A. Set the Destination IP address to 192.168.0.51.
- B. Disable the Web Services rule for the Incoming Traffic Type.
- C. Change the ACME External rule Traffic Type to Incoming.
- D. Set the ACME External rule to Allow.

Answer: D

5. Click the Exhibit button.

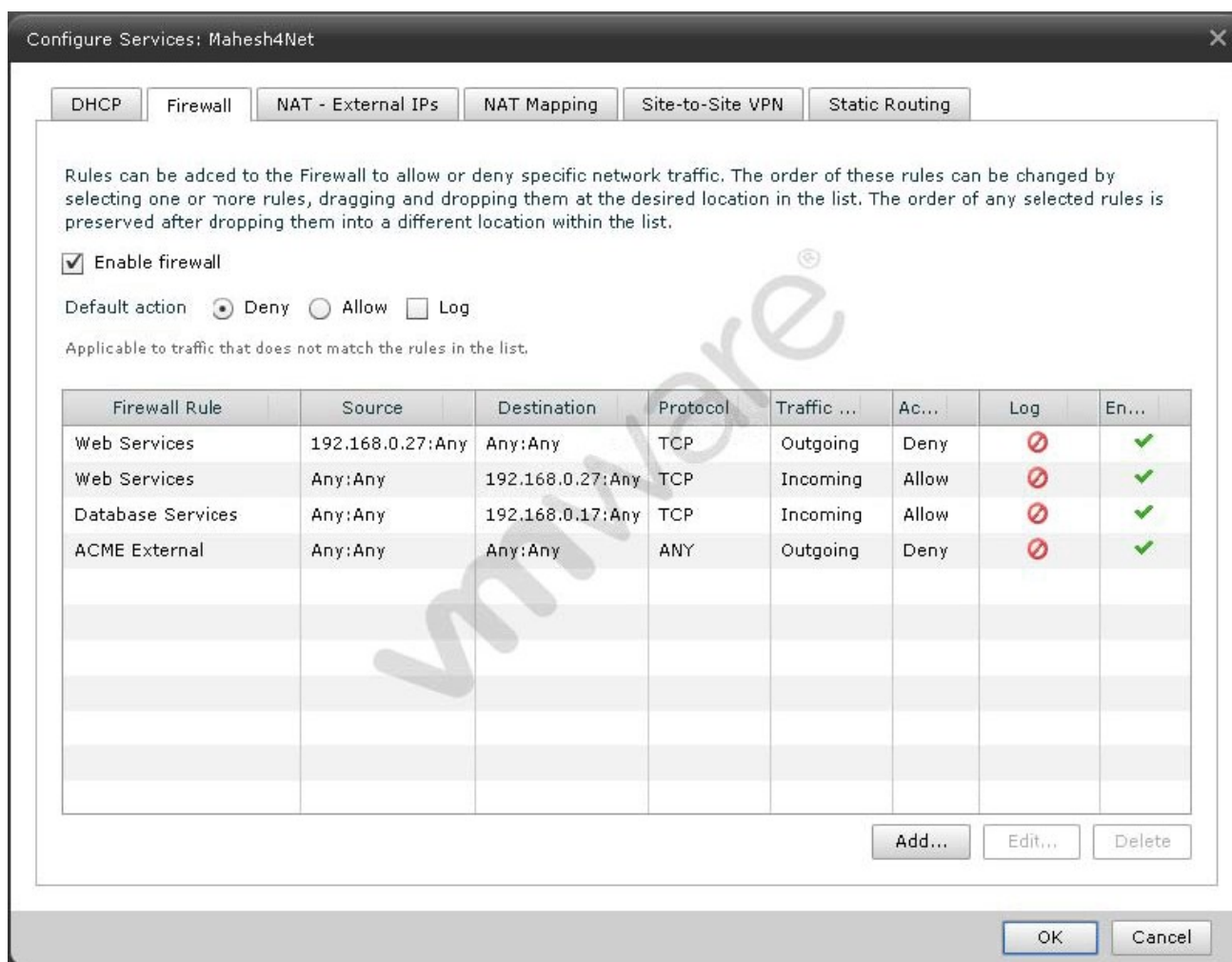


Which External Organization Network type is being created in the Organization Network Creation Wizard?

- A. External port group-backed
- B. External VLAN-backed
- C. External Direct
- D. External Routed

Answer: D

6. Click the Exhibit button.



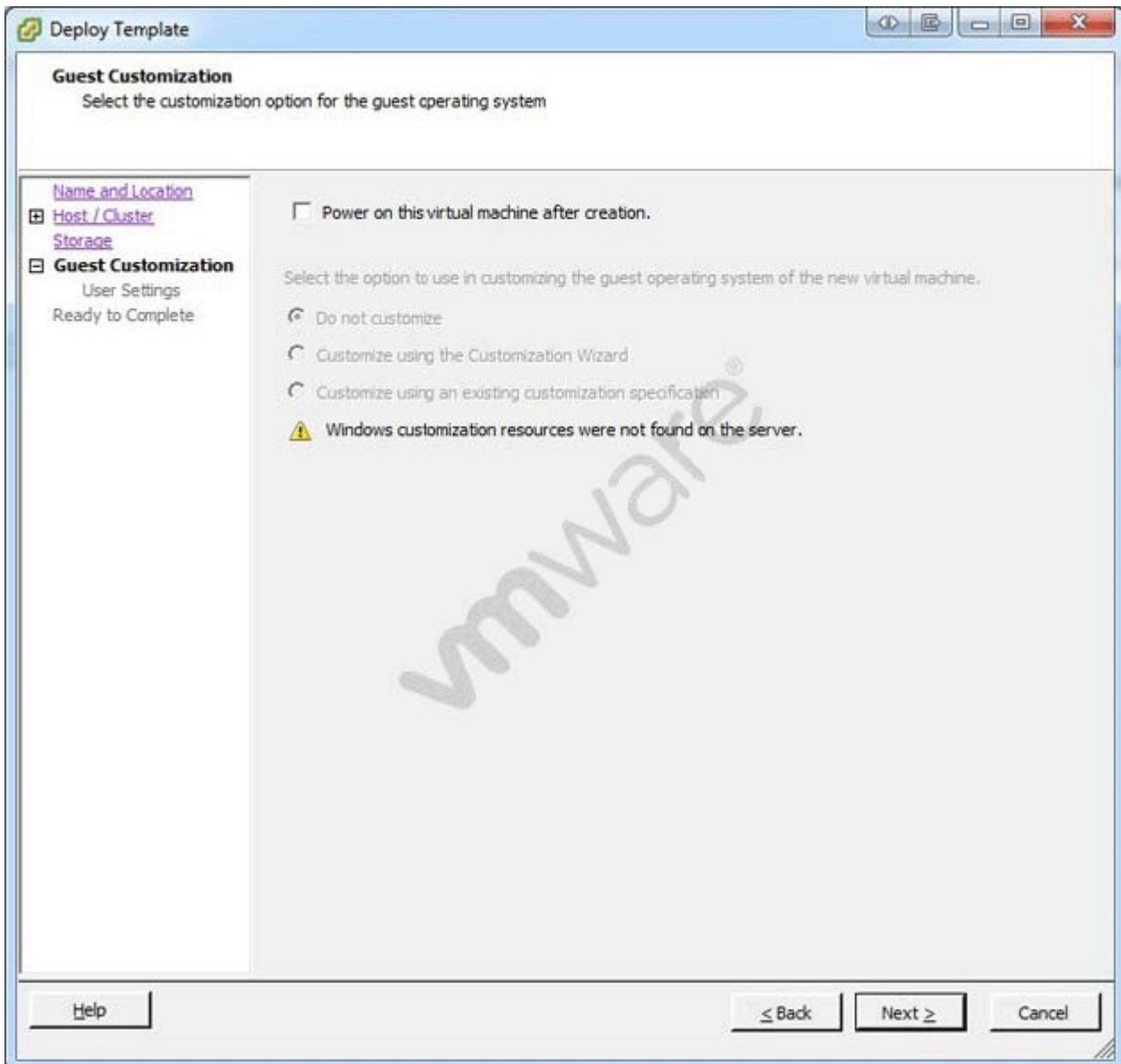
ACME has a Web Server virtual machine with an IP Address of 192.168.0.27. It is not responding to incoming customer requests on either internal or external networks. The network is an External Routed network with the firewall rules displayed in the exhibit.

Which configuration change would correct this behavior?

- A. Change the Outgoing Web Services rule to Allow.
- B. Change the IP Address of the Incoming Web Services rule to 192.168.0.17
- C. Change the IP Address of the Web Services Source to 192.168.0.17
- D. Delete the Outgoing Web Services rule.

Answer: A

7. Click the Exhibit button.



An administrator has implemented a new vSphere 5 environment and is deploying their first Windows 2008 R2 template. When running the Deploy Template wizard, the error shown in the exhibit appears. What can be done to correct the problem?

- A. Select the correct guest OS setting for the virtual machine.
- B. Windows 2003 x64 cannot be customized.
- C. Download and install the Microsoft Sysprep tool into the virtual machine to be customized.
- D. Download the Microsoft Sysprep tool to the appropriate vCenter Server directory.

Answer: A

8. Your Cloud Administrator has asked you to deploy an Edge Gateway that will serve as a primary gateway for multiple Org vDC Networks. It has been decided that the size of the Edge Gateway will be Full.

When the Edge Gateway is deployed, what is the correct number cpus, memory, and cpu shares that will be automatically allocated?

- A. 1 cpu(s) with 1000 Shares and 256MB of memory.

- B. 2 cpu(s) with 1000 Shares and 512MB of memory.
- C. 2 cpu(s) with 2000 Shares and 1024MB of memory.
- D. 1 cpu(s) with 2000 Shares and 256MB of memory.

Answer: C

9. Click the Exhibit button.

Leases

Specify the maximum time that vApps and vApp templates can run and be stored in this organization's vDC(s).

vApp leases:

Maximum runtime lease: 7 Days *

How long vApps can run before they are automatically stopped.

Maximum storage lease: 90 Days *

How long stopped vApps are available before being automatically cleaned up.

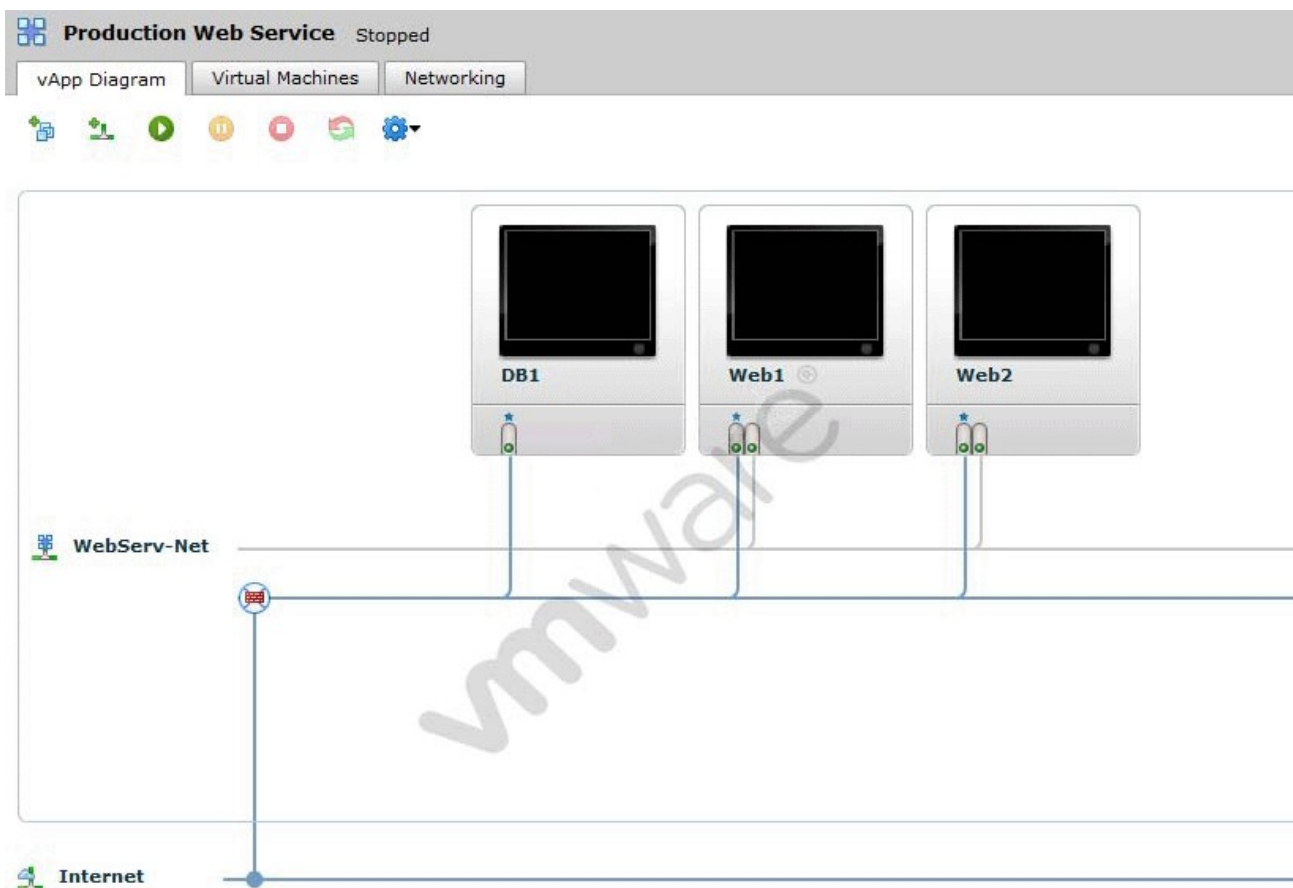
Storage cleanup: Move to Expired Items

How long will VMs deployed in an organization with the indicated settings reside on storage?

- A. Until powered off
- B. Indefinitely
- C. Three months
- D. One week

Answer: B

10. Click the Exhibit button.



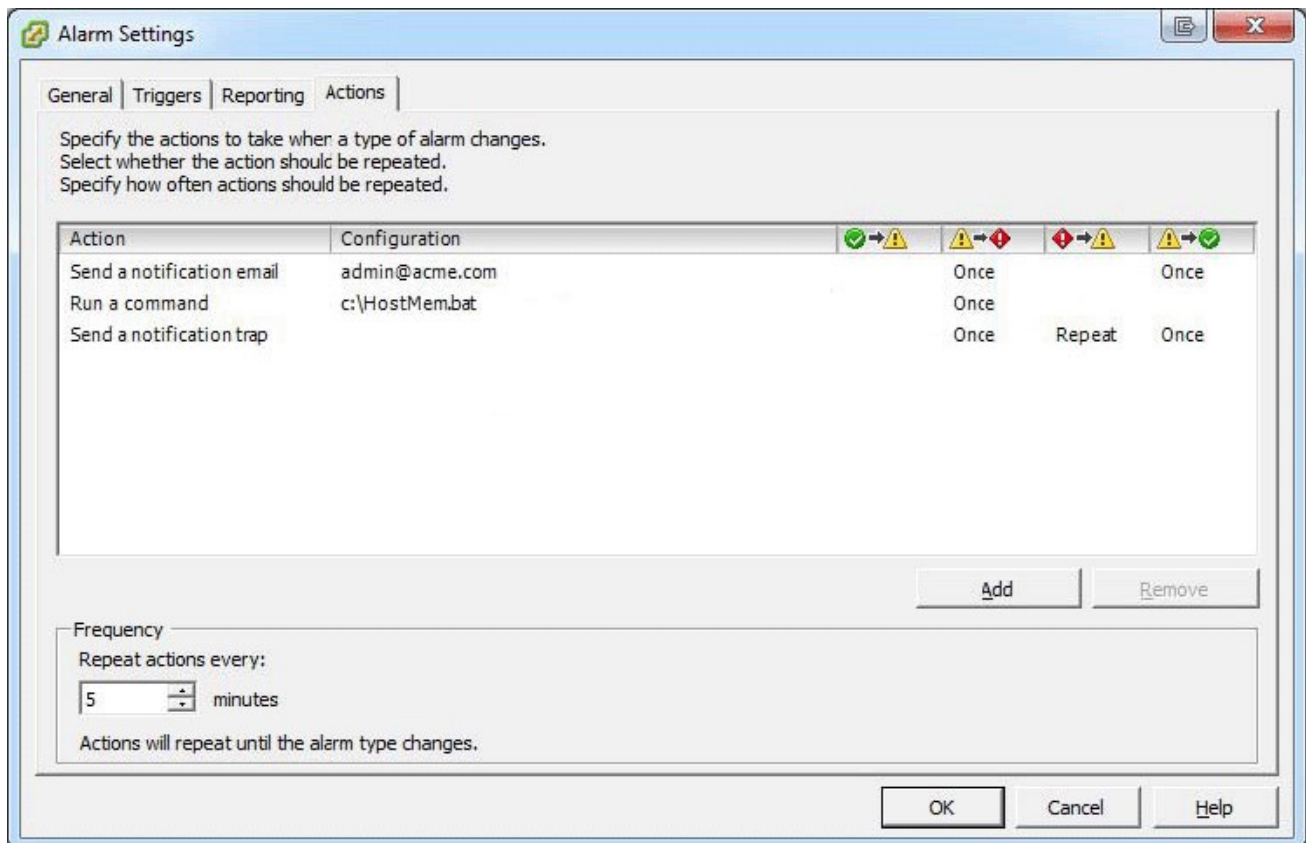
A business requires the DB1 server to remain isolated from the Internet. Web1 and Web2 are multi-homed and not configured to forward packets.

Based on the exhibit, what must be done to meet the business requirement?

- A. Deploy an additional vShield Edge device between DB1 and Web VMs.
- B. Connect DB1 to a new isolated network.
- C. Modify the DB1 NIC to connect to WebServ-Net.
- D. Deploy an additional vShield Edge device between DB1 and the Internet.

Answer: C

11.lick the Exhibit button.



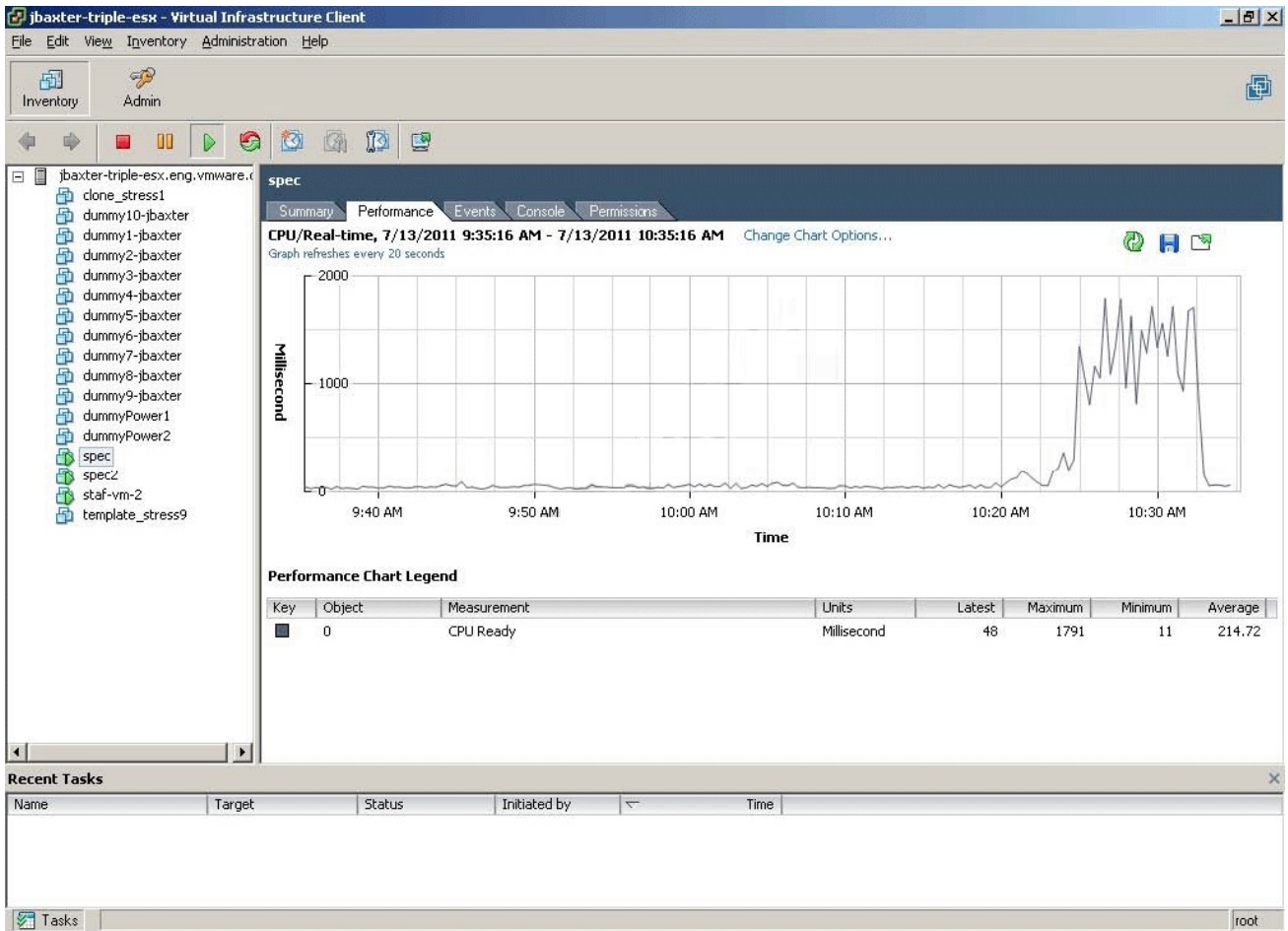
An administrator is seeing a warning on one of their hosts. The warning in the Triggered Alarms panel appears to come from a custom configured host alarm. The administrator has not seen any actions taken for this alarm even though the actions are configured in the alarm definition. The configured actions are shown in the exhibit.

What change can the administrator make to correct the problem?

- A. Configure the Alarm Frequency to repeat more often.
- B. Add an action for when the alarm changes from yellow to red.
- C. Add an action for when the alarm changes from green to yellow.
- D. Configure the alarm yellow to red action to repeat for all three actions configured.

Answer: C

12. Click the Exhibit button.



Which change will eliminate the symptom in the performance chart shown in the exhibit?

- A. Set CPU shares to High
- B. Set CPU affinity for the virtual machine
- C. Migrate the VM to a host that is less utilized
- D. Add a CPU to the virtual machine

Answer: C

13. What differentiates a private cloud from a vSphere Infrastructure?

- A. A private cloud requires pooled resources including storage and networking.
- B. vSphere Infrastructure assumes a secure location for the workloads.
- C. vSphere Infrastructure allows consumption of resources over open standards.
- D. A private cloud assumes the consumer will maintain their portion of the infrastructure.

Answer: A

14. Which component is the metering tool for vCloud administration?

- A. VMware vCenter Chargeback
- B. VMware vCloud Service Manager
- C. VMware vCloud Request Manager
- D. VMware vCloud Director

Answer: A

15.What is the default VFAT scratch partition size for ESXi 5.x when installed on a USB drive?

- A. 600MB
- B. 544MB
- C. 4GB
- D. none

Answer: D

16.An administrator is unable to find network traffic details while running vCloud hierarchy reports. The network administrator confirms that there was network traffic during the report time span.

Which collector is configured incorrectly?

- A. vCenter Data Collector
- B. vCenter Chargeback Data Collector
- C. vCloud Data Collector
- D. vShield Manager Data Collector

Answer: D

17.An administrator has scheduled a report to run at 8 PM nightly and has configured a number of recipients to receive the report. After the report runs, the administrator discovers that a link to the report was sent to the recipients, not the report itself.

Why did this occur?

- A. vCenter Chargeback cannot support attachments via email.
- B. The report size was larger than the size limit configured for the SMTP server.
- C. vCenter Chargeback was configured to send links instead of attachments.
- D. The SMTP server was configured not to accept attachments.

Answer: B

18.In a large organization, a user has 10 VMs deployed in vCloud Director, backed by a Pay-As-You-Go allocation model. The user needs to determine the charges being incurred for resource usage.

Which report type does the user need?

- A. Showback Report
- B. Usage Report
- C. Cost Comparison Report
- D. Cost Report

Answer: D

19.An administrator attempts to delete the network named Internet but receives an error.

What is a possible reason for the error?

- A. The network named Internet is backed by a port group on a vSphere Standard Switch.
- B. The vShield Edge appliance on the external network is powered off.
- C. The administrator needs to be an Organization Administrator.
- D. The network is still in use by an Organization.

Answer: D

20.An existing port group-backed network pool has been fully provisioned (25 out of 25 networks have

been deployed).

How can an administrator provide greater capacity for creating additional Organizational Networks?

- A. Increase the number of networks in the network pool properties.
- B. Create a new network pool and attach it to the organization VDC.
- C. Create additional port groups on the vSphere Distributed Switch and add them to the network pool.
- D. Remove any configured vApp networks and re-create a larger network pool.

Answer: C